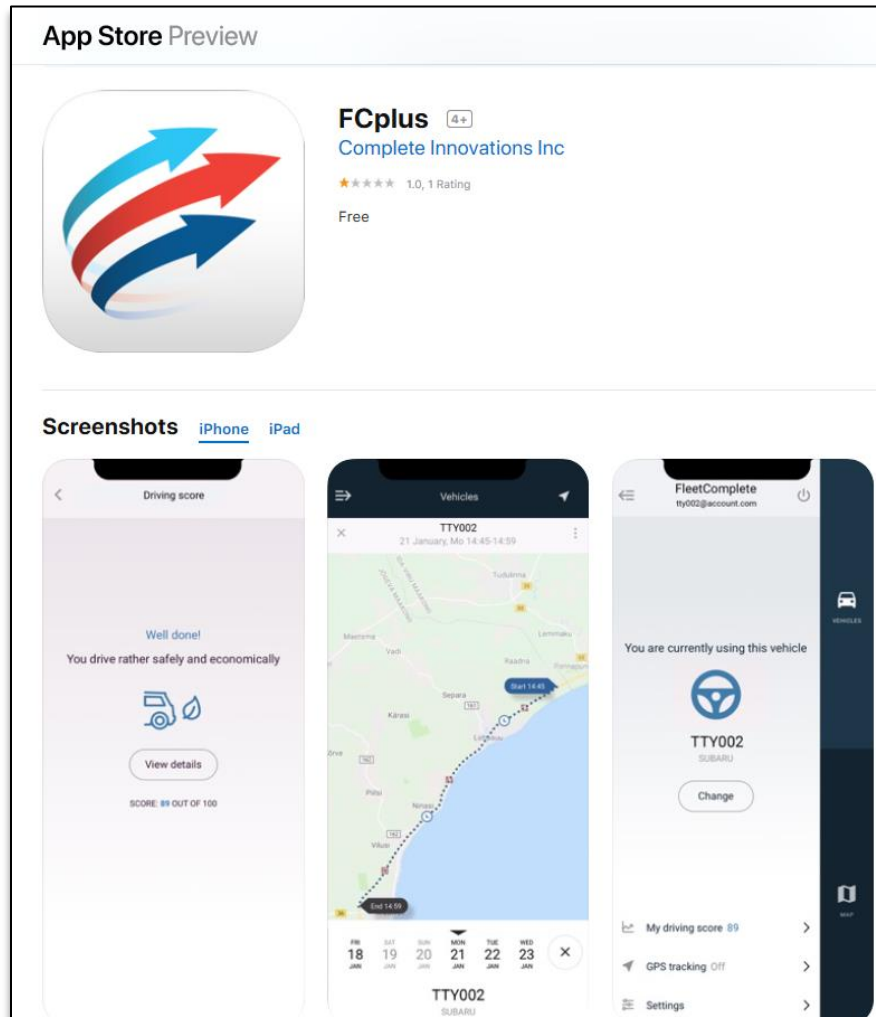




**AT&T FLEET COMPLETE USER MANUAL -  
FIELD USERS**

**MARCH 2020**

## MOBILE APP



### What Functionality Available through the Mobile App?

#### Track Vehicles

- View vehicle on map
- View vehicle information
- View vehicles on the map, such as street view
- Directions to a vehicle

## RUNNING AT&T FLEET COMPLETE (DESKTOP OR MOBILE APP) FOR THE FIRST TIME

How will users access AT&T Fleet Complete for the first time?

Weblink: <http://utiservllc.welcometofleetcomplete.com/>

Enter Network User ID and password. AT&T Fleet Complete is enabled with SSO for each of access management

When a user Changes their network (SSO) password is the change pushed to AT&T Fleet Complete immediately?

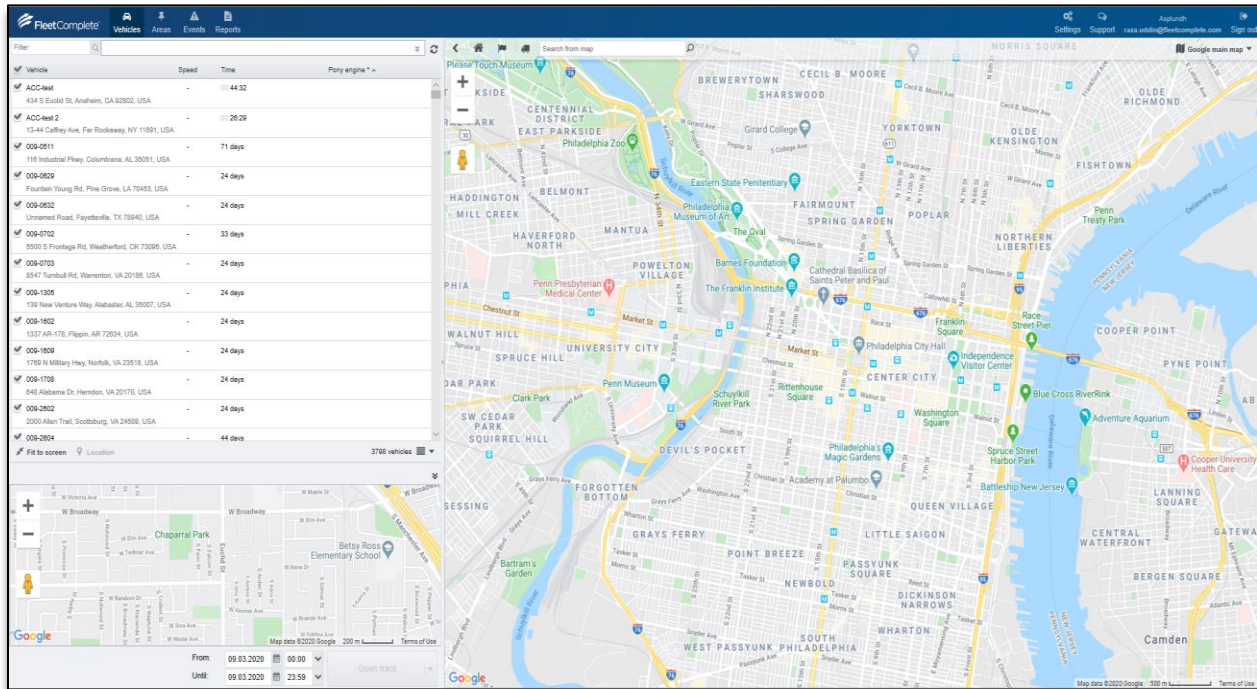
Users will access AT&T Fleet Complete through single sign on (SSO) with no password on AT&T Fleet Complete side, the authentication is done through the SSO provider.

How do users Log Out?

The user logs out from AT&T Fleet Complete by clicking “Log out” button, but this will not invalidate their SSO session.

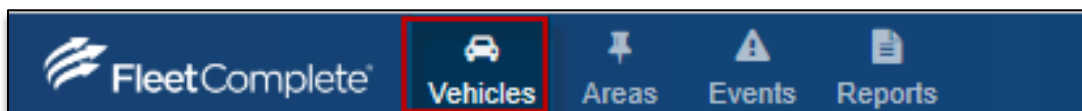
Is there a standard timeout session established with the SSO integration?

The SSO session will never be invalidated from AT&T Fleet Complete side. The AT&T Fleet Complete session is valid for 3hours if no actions are made.



## VEHICLE/MAP WINDOW

How do I navigate to the Vehicle module?



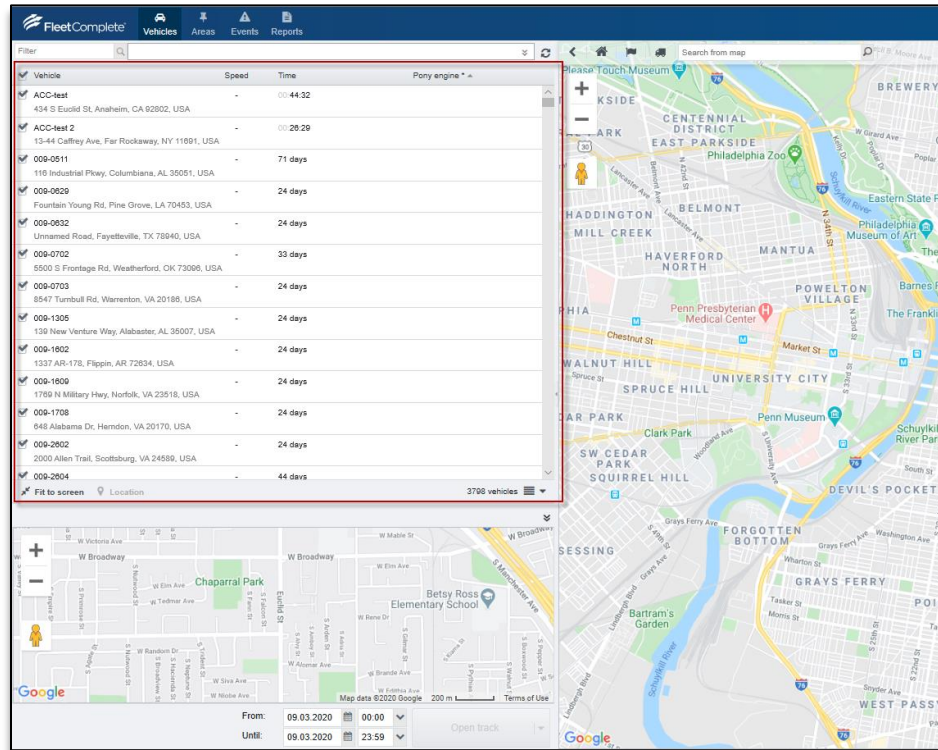
The default view when a user access AT&T Fleet Complete is to view the vehicle and map view. The Vehicles module is accessed by clicking the **Vehicles** button on the header menu bar.

What are the main Purposes of the Vehicles module?

- Its main purpose is to give the latest information on vehicles
- The list of the vehicles can be used to navigate the map
- The history of vehicle movements (track) can be viewed

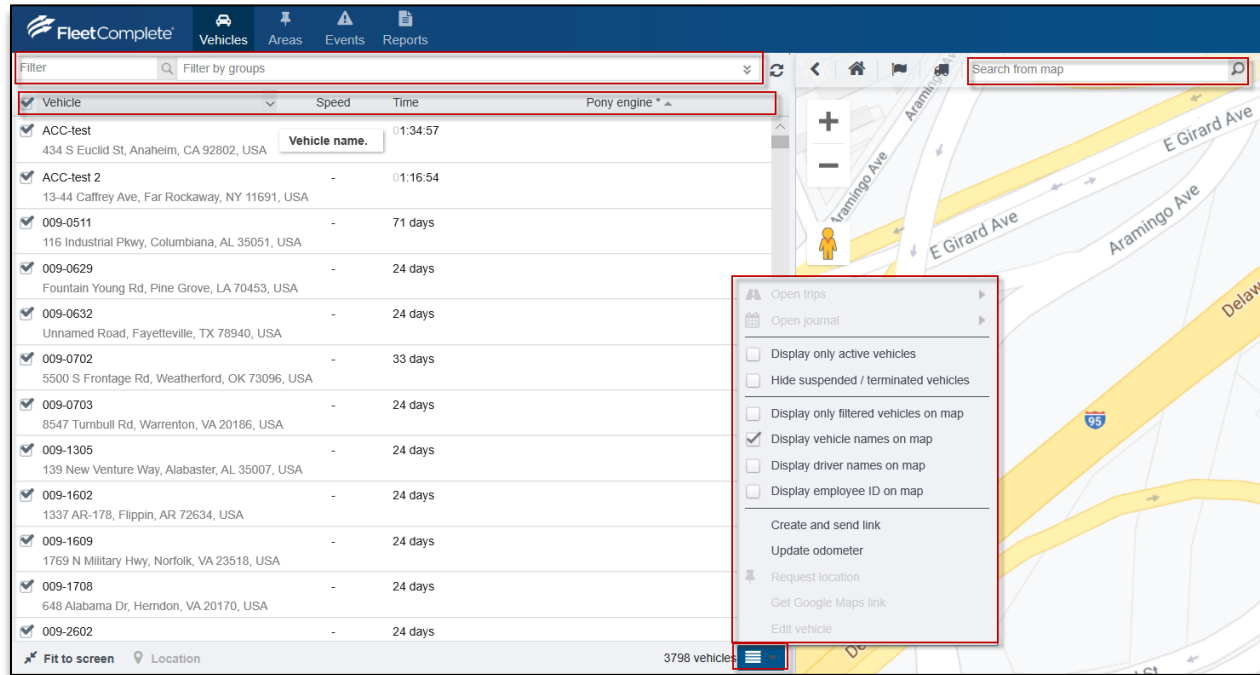
### Vehicle List

The left panel in the Vehicles module will display a list of all your vehicles. The right panel will display the map.



### Which data columns are available for Vehicles List?

- Vehicle column includes the name and current location of the vehicle. If the location is within an area that has Sets address checked, the name of the area is displayed. Otherwise, the address info is displayed.
- The Speed column displays the current speed of the vehicle.
- The Time column displays how old the current data is.



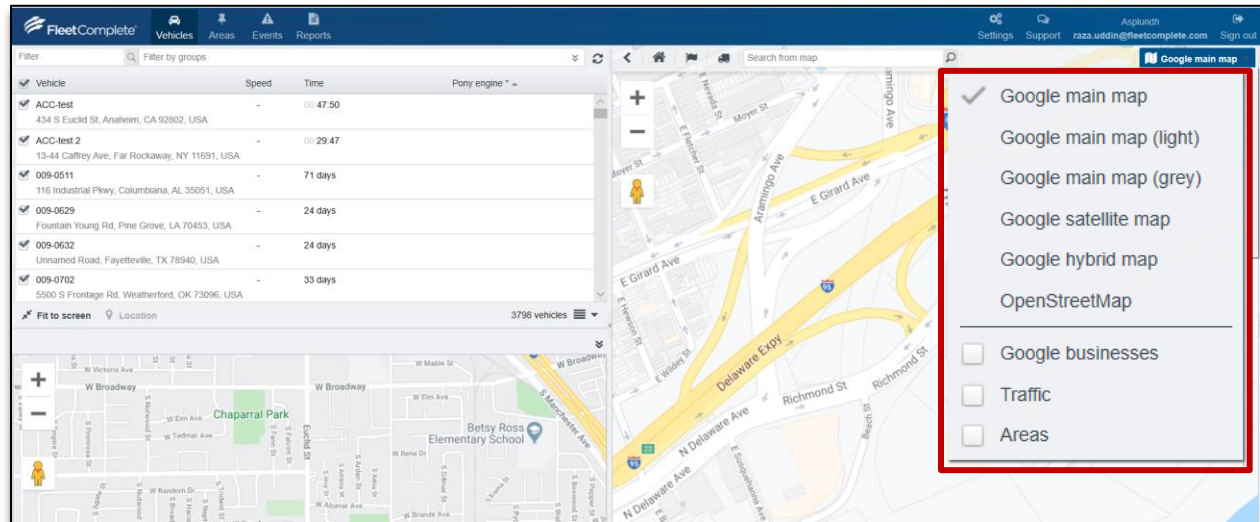
## Searching and filtering capabilities for Vehicles

The vehicle list can be filtered and searched by vehicle name and by groups using the search bars at the top of the Vehicle list.

**For example.** Groups "Region" (that contains sub-groups "group-a", "group-b", "group-c") By selecting group-a and a vehicle name, all the vehicles in group-a and the specific vehicle are displayed and the rest of the vehicles filtered out.

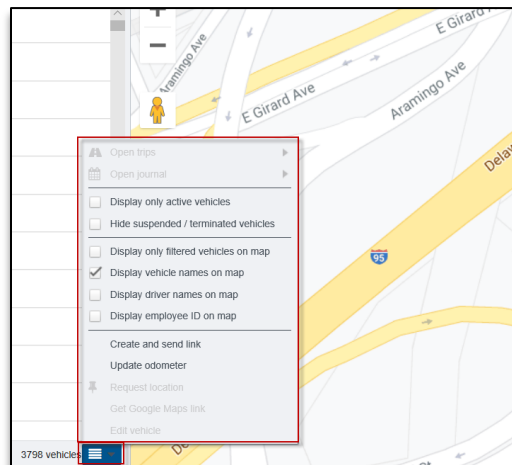
## Setting your default Map View?

The default map view is Google Maps. It can be changed from the top right corner. Whenever the user changes the map layer it is saved as their preference. It is not possible to specify separate map center coordinates. The map snaps to a size to fit all visible assets.



## Displaying Vehicles on the Map

Additional display options are available by accessing the hamburger icon at the bottom of the vehicle list to open a menu of display options for vehicles on the map.



## What is the app refresh rate?

The vehicle's last data is refreshed in app in every 30 seconds.