



# ***Welcome to the Fleet Complete Training Series***

FC HUB APPLICATION – MOBILE APP

# Table of Contents

## **How to use this eBook**

*This online format enables you to locate topics of interest by using a dynamic table of contents.*

1. *To access a topic, click a blue underlined hyperlink.*
2. *To return to the Table of Contents page, click the Grey Book icon that is located in the upper right corner of every page.*

### **Tip!**

*You can also press the CTRL and F keys at the same time to perform key word searches.*

## **Mobile App.**

[Track Module: New Layout](#)

[Map](#)

[Map View](#)

[My Location](#)

[Map view mode](#)

[Assets and Geofences: List View Mode](#)

[Assets and Geofences: List View Mode- Cont'd](#)

[Quickview mode mode](#)

[Asset Filter Button](#)

[Geofence Filter button](#)

[Map Module: Global Search](#)

[Search : Asset and Geofence](#)

## **Geofence and Asset Visibility**

[Map Display – & Geofences Visibility](#)

[Review of Assets Filter Button](#)

[Assets Filter Button – Search & Select Groups](#)

[Assets Filter Button – Apply Groups](#)

[Map – Assets Group Visibility](#)

[Geofences Filter button Select Groups](#)

[Geofences Filter Button – Apply Groups](#)

[Map – Geofences Group Visibility](#)

[View Assigned Asset Group in Asset Details](#)

[View Assigned Asset Group in Asset Details cont'd...](#)

[View Assigned Geofence Group in Geofence Details](#)

[View Assigned Geofence Group in Geofence Details cont'd...](#)



***Let's review updates made to the Mobile App.***

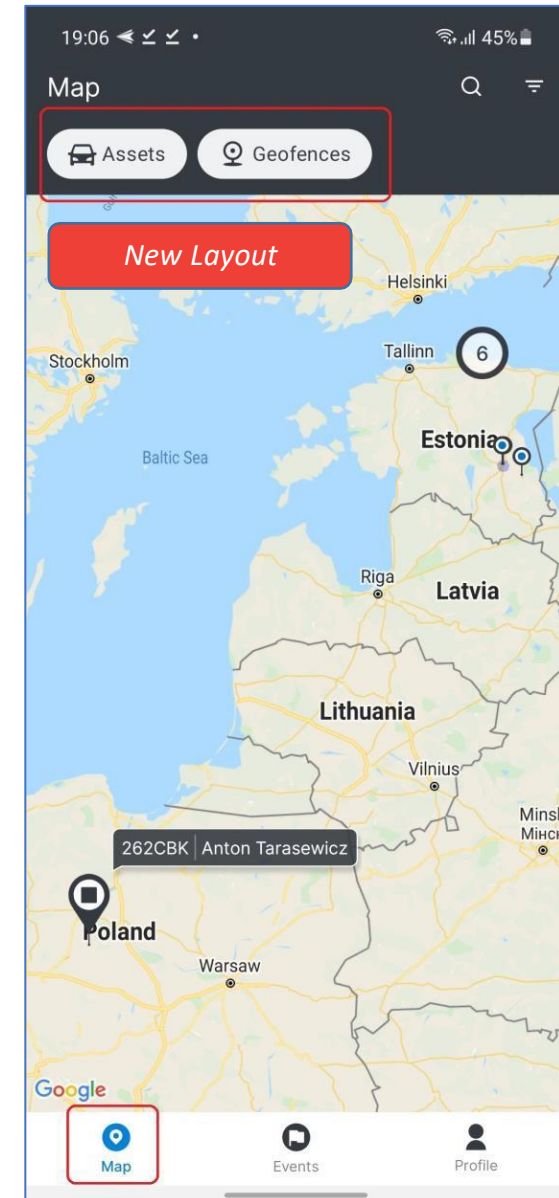
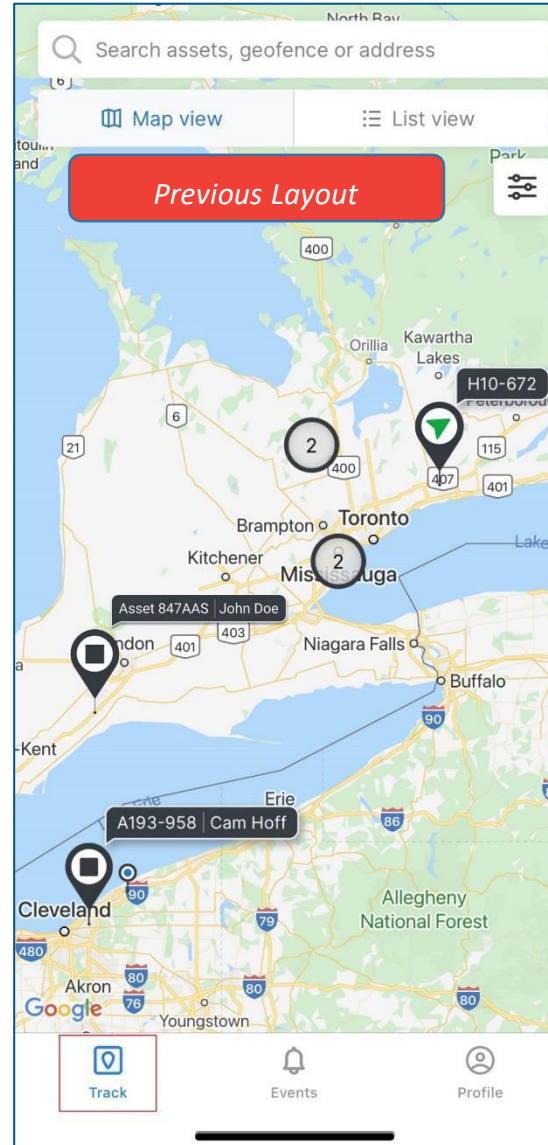
---





# Track Module: New Layout

- The **Track Screen** is the **default Screen** of the App when a user logs in to the **FC HUB Mobile App** (The Official name is **Fleet Complete ONE**).
- The previous **Track Screen** layout of the FC HUB Mobile App could be open into:
  - **Map view**
  - **List view**
    - The **List view** further could open into:
      - ❑ **Assets**
      - ❑ **Geofences**
- With this release, the **Track Screen** layout can open into:
  - **Assets**
  - **Geofences**
- This feature improves navigation clarity and provides more **efficient routing** between the two (asset and Geofences) screens.
- **Note: All the previous functionalities with the Geofences list and the Assets list will remain the same.**

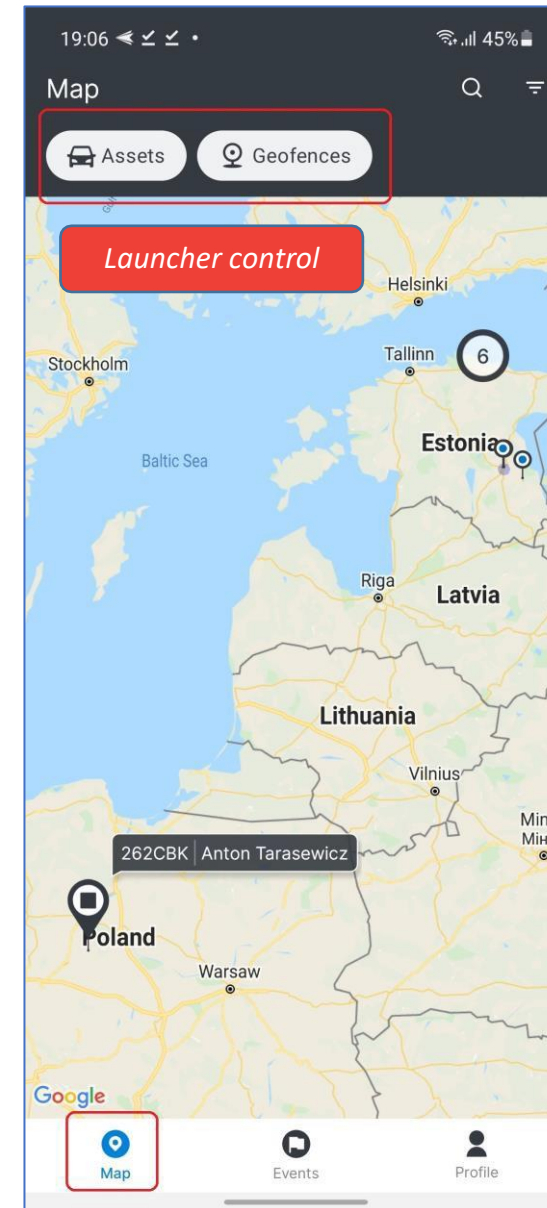


# Map



[Table of Contents](#)

- The **Track module** will now be called as **Map** in FC HUB Mobile App.
- The Module's name '**Map**' is displayed in the header on top of the default screen.
- The map component is the main view; other views in the map module will open on top of it.
- **Assets and Geofence** list will open on top of the map component.
- **Global Search** and **Filter button** options are visible on the Map module.
- Follow the steps below to access the Map Module on the FC Hub Mobile App:
  1. Log in to **FC HUB Mobile App**
  2. By default, the **Map Screen** will be displayed



Global Search

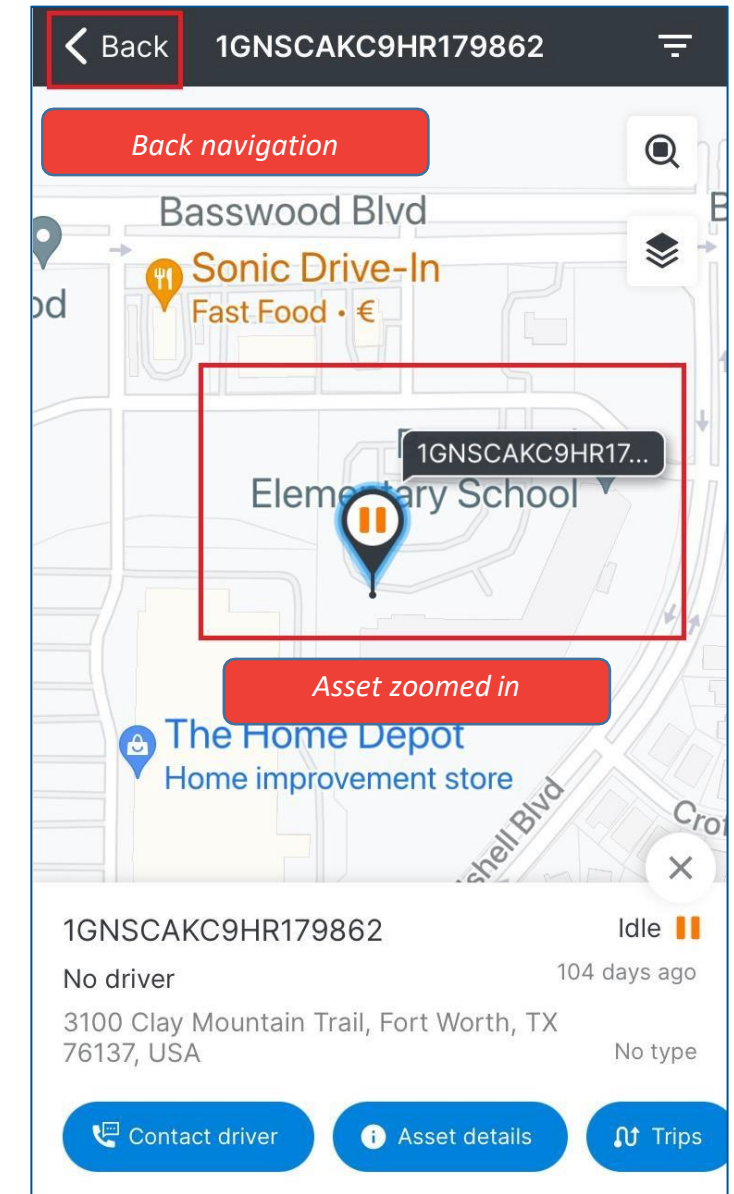
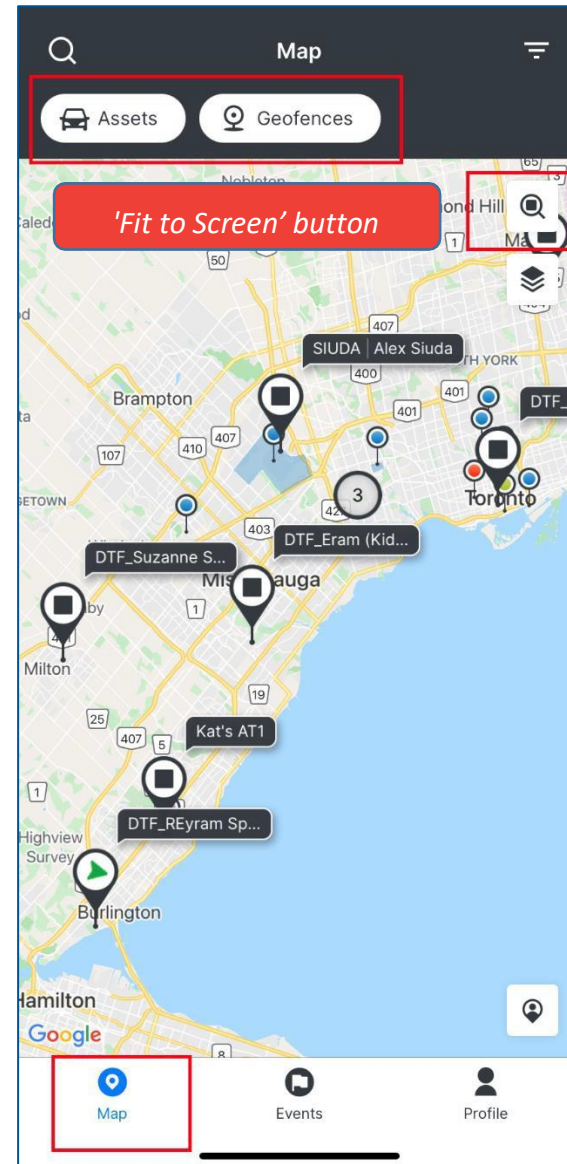
Filter Button





# Map View

- FC HUB Mobile App users can now access **Assets and Geofences directly** from the map view on the Map module.
- The **Zoom level** is adjusted when selecting any element (asset, geofence or a cluster) on the Map.
  - Tapping on any map element (Asset marker, Geofence marker or My location marker) except cluster marker will centre the tapped marker with zoom level 17 (or keep the zoom level, if between 15-19).
  - Select an **asset or a geofence on the Map**. The screen will be zoomed in to that asset or geofence.
  - Zoom level will restore with the **Back** navigation button on the top of the screen.
- Users can also use a **'Fit to Screen'** button on the Map. It will fit the Screen size and orientation.



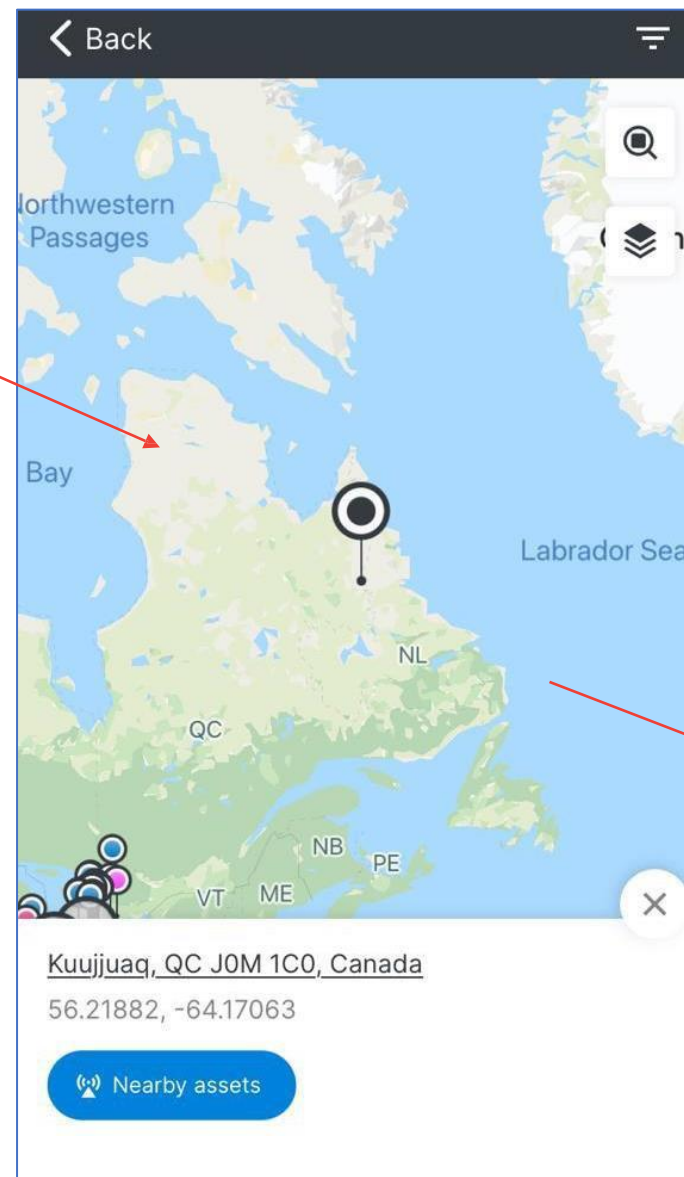
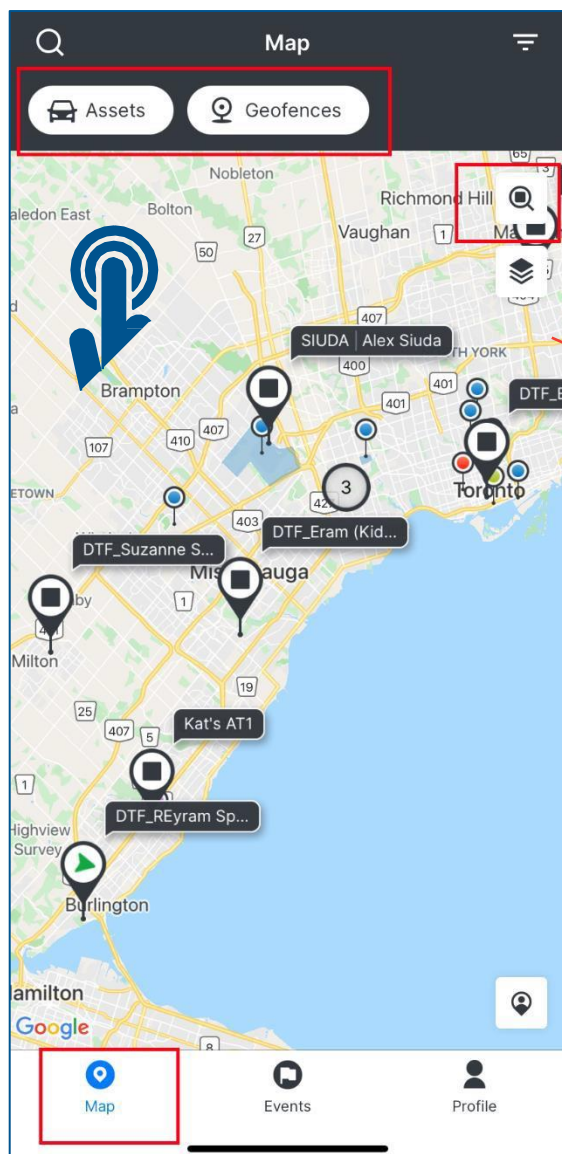


# My Location



[Table of Contents](#)

- **FC HUB Mobile App** users can **long tap** on the Map screen to locate the address of the selected point and find nearby Assets.





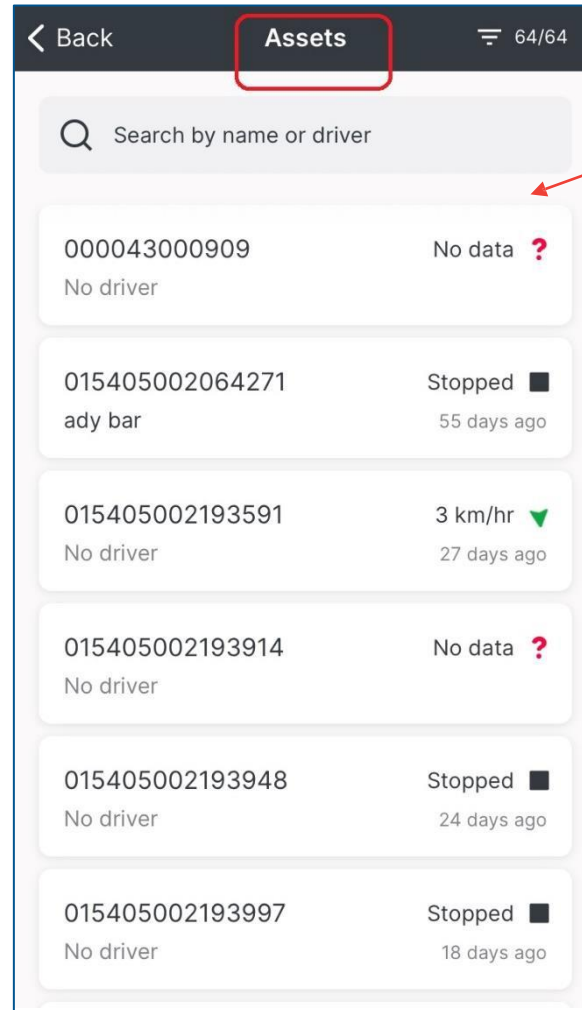
# Map view mode

- The Main Screen of the Map module can be opened into two different Modes/Screens such as:

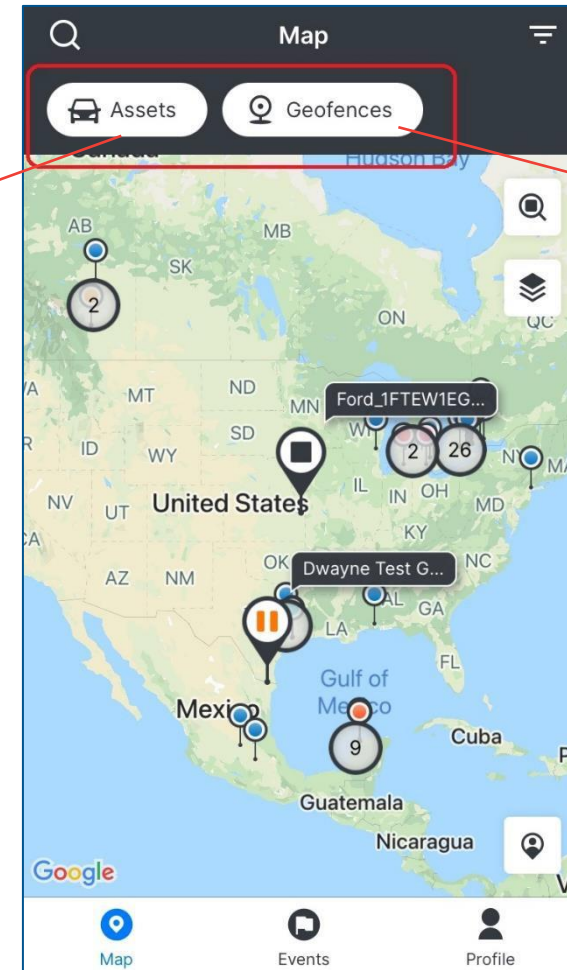
- **Assets**
- **Geofences**

- Follow the steps below to open the Assets or Geofences Screen as necessary:

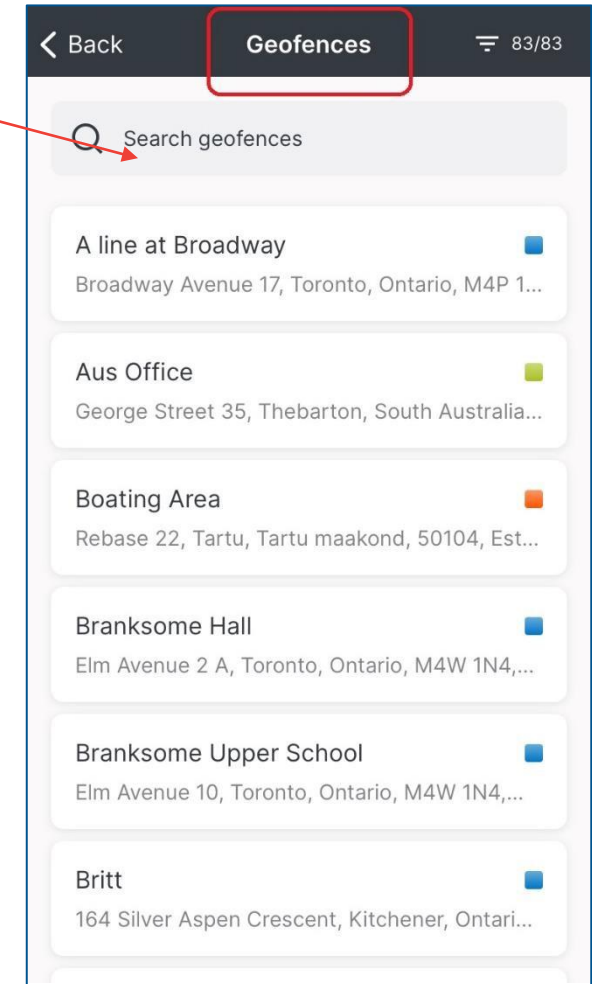
1. Log in to **FC Hub Mobile App**
2. By default, the **Map module** will be displayed
3. Tap the **Asset button** on the top
4. Alternatively, tap the **Geofence button** on the top
5. New Screens will appear as the **Assets** or the **Geofences**, as shown in the picture



Assets List View Screen



Map Module Screen



Geofences List View Screen





# Assets and Geofences: List View Mode

➤ An asset in the **Assets List** of the Map module contains the following information:

- **Asset name**
- **Driver name**
- **Speed**
- **Status (Active, Idle, Stopped, No data)**
- **Last time updated**

➤ Each geofence in the list contains the following information:

- **Geofence name**
- **Geofence Address**
- **Geofence Colour**

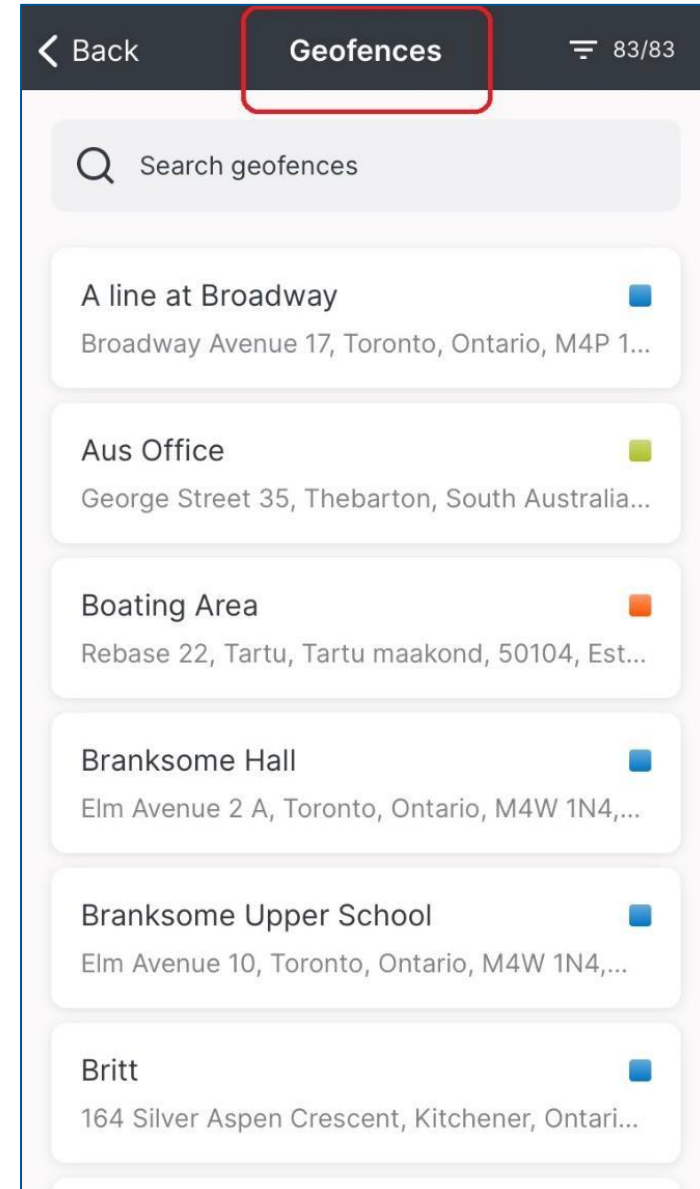
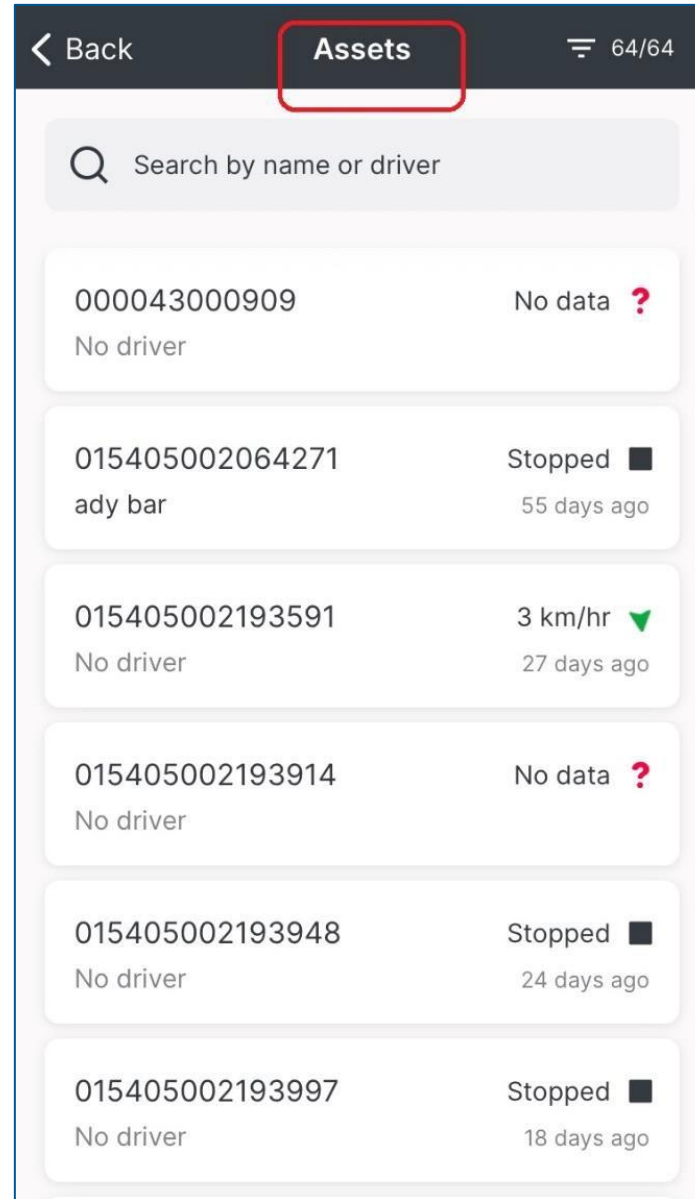
Assets	
Search by name or driver	
000043000909 No driver	No data ?
015405002064271 ady bar	Stopped ■ 55 days ago
015405002193591 No driver	3 km/hr ▼ 27 days ago
015405002193914 No driver	No data ?
015405002193948 No driver	Stopped ■ 24 days ago
015405002193997 No driver	Stopped ■ 18 days ago

Geofences	
Search geofences	
A line at Broadway Broadway Avenue 17, Toronto, Ontario, M4P 1...	■
Aus Office George Street 35, Thebarton, South Australia...	■
Boating Area Rebase 22, Tartu, Tartu maakond, 50104, Est...	■
Branksome Hall Elm Avenue 2 A, Toronto, Ontario, M4W 1N4,...	■
Branksome Upper School Elm Avenue 10, Toronto, Ontario, M4W 1N4,...	■
Britt 164 Silver Aspen Crescent, Kitchener, Ontari...	■



# Assets and Geofences: List View Mode- Cont'd

- Users can access the list view (Assets/Geofences) by tapping on the 'Assets/Geofences' button from the Map view mode.
- Assets/Geofences list will display the following:
  1. **Search button** and **Filter button** options for Geofence and Asset on the top.
  2. Screen header will display **"Assets/Geofences."**
  3. **Back navigation** button '<' appears on top of the toolbar's left-hand side. Users can navigate back to map view by tapping on the button

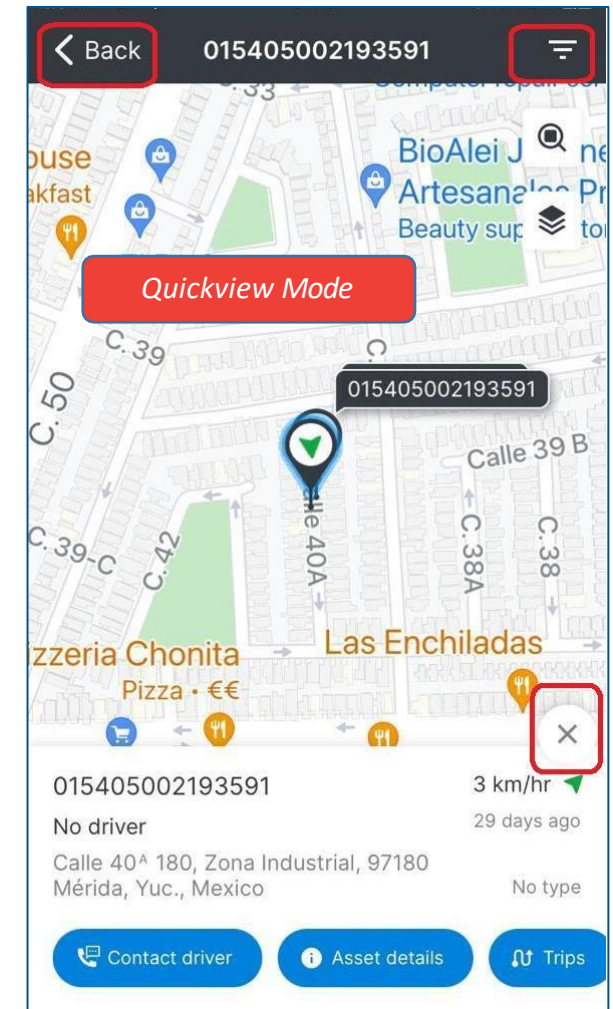
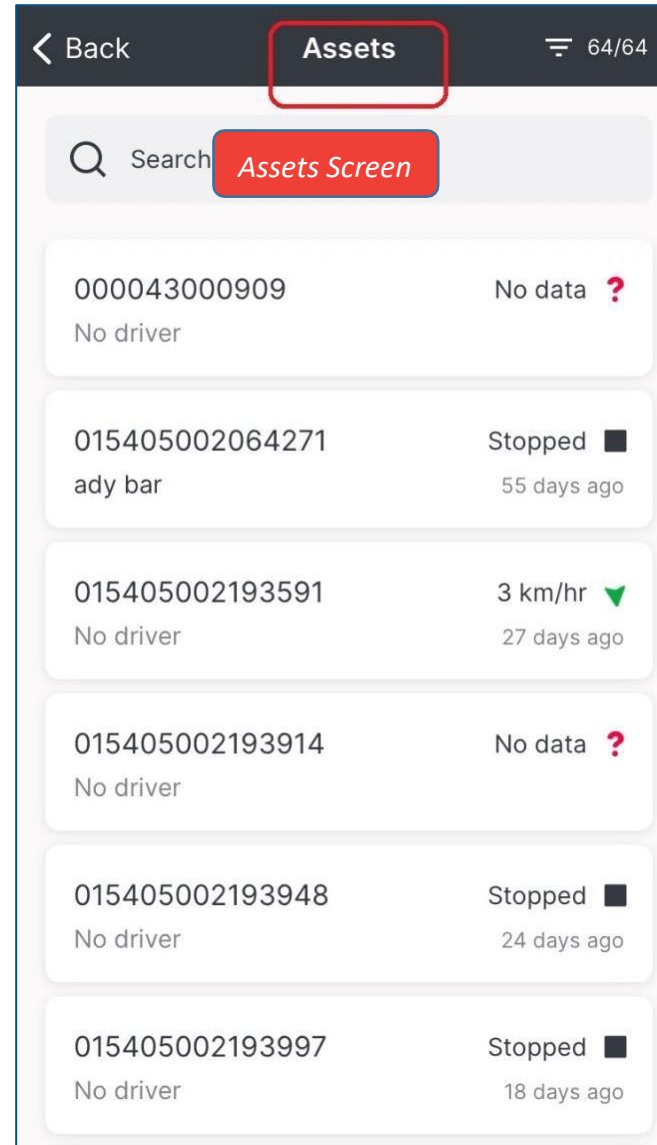


# Quickview mode mode



[Table of Contents](#)

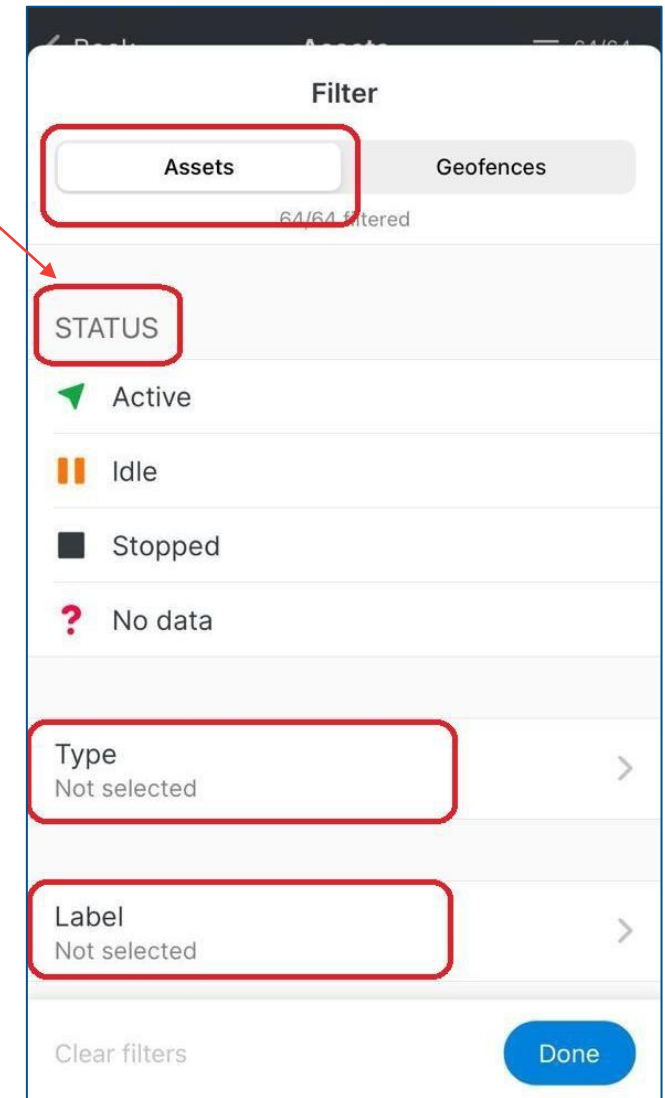
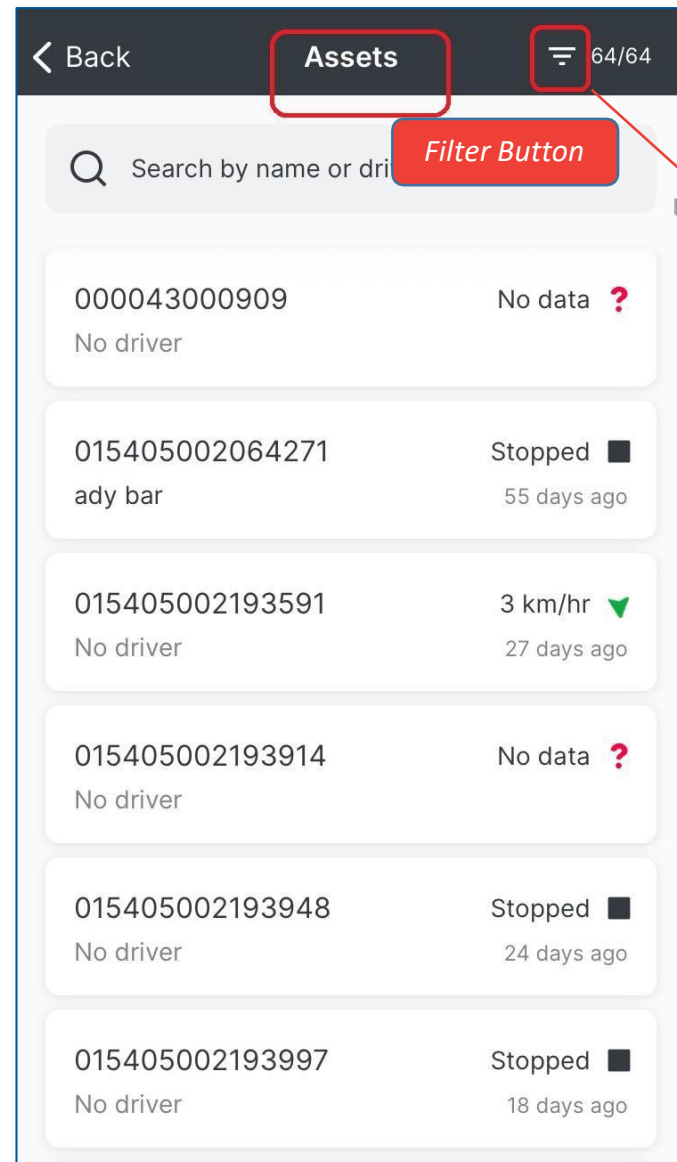
- When a user taps on a specific Asset/Geofence from the **Asset/Geofence List view mode** or the **Map view mode**:
  - Assets/Geofences list view or the Map view mode is hidden, and Map Screen is displayed in **Quickview mode**.
- The **Filter button** is available on the Quickview mode.
- If the user picked the asset from the list, he would be taken back to the list view with the selected asset visible in the viewport.
  - Same for nearby Assets and Global search lists.
- If the user picks the asset by tapping the marker on the map, when the Quickview closes, the Map view mode will be enabled.
- Users can exit the Quickview mode by tapping on “X” on the Quickview card or by tapping on the **empty map area**.





# Asset Filter Button

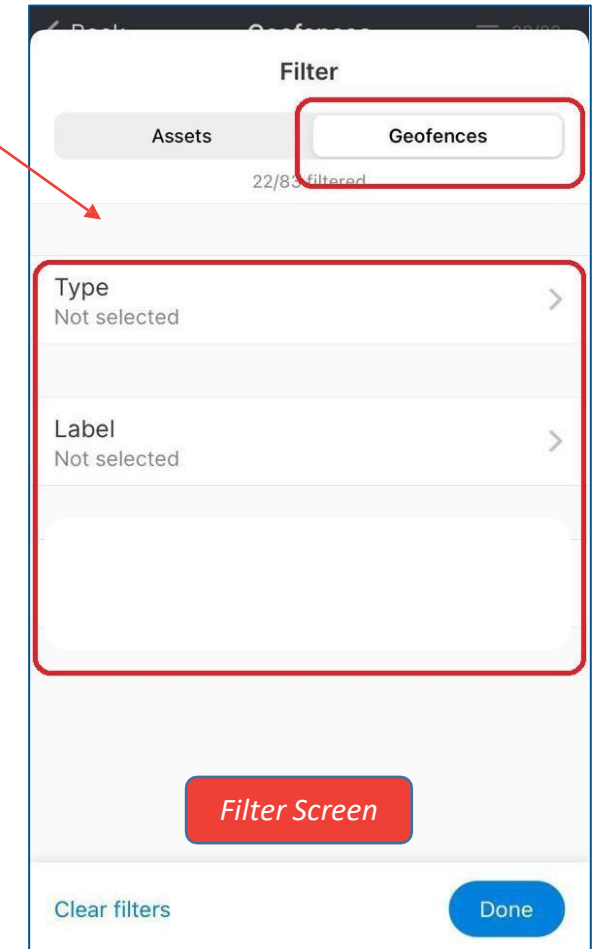
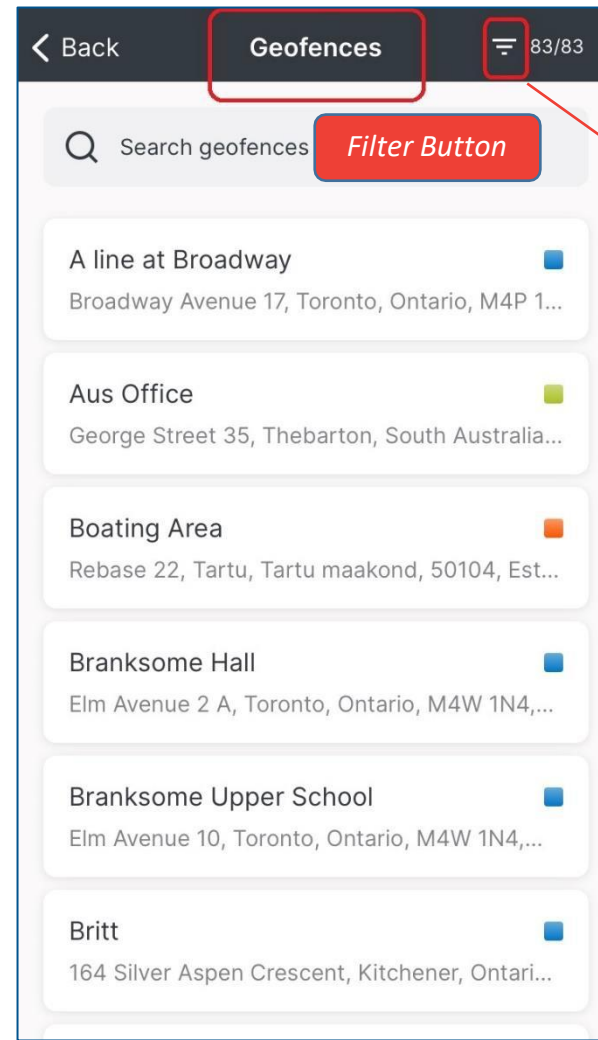
- FC HUB Mobile App users will be able to use filters from the Assets tab by clicking on the **Filter button** on the top.
- The **Filter Screen** displays options as below:
  - **Status:** Users will be able to filter their assets as per the statuses defined. The status of the asset can be:
    - **Active:** The asset is driving.
    - **Stopped:** The ignition is OFF of an asset.
    - **Idle:** The ignition is ON for an asset, but the asset is not moving.
    - **No data:** No data is received from the device.
  - **Type:** Types of the assets can be car, truck etc.
    - The new Assets types can be only created from the Web. However, users can choose the types from the app.
  - **Label:** Users can label/tag their Assets. It helps customers flexibly categorize Assets.
    - The new Assets labels can be only created from the Web. However, users can choose the labels from the app.





# Geofence Filter button

- FC HUB Mobile App users will be able to use the filters from the Geofence tab by clicking on the **Filter button** on the top.
- The Filter options are as below:
  - **Type:** Types of the Geofences can be a parking lot o Boating Area etc.
    - The new Geofences types can be only created from the Web. However, users can choose the types from the app.
  - **Label:** Users can label/tag their Geofences. It helps customers flexibly categorize Geofences.
    - The new geofence labels can be only created from the Web. However, users can choose the labels from the app.



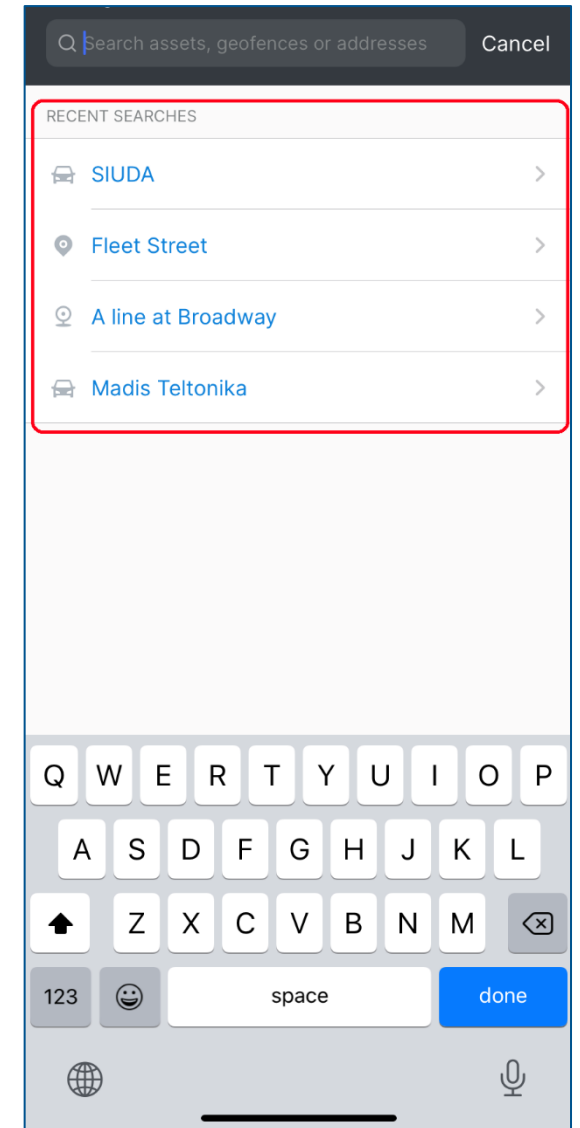
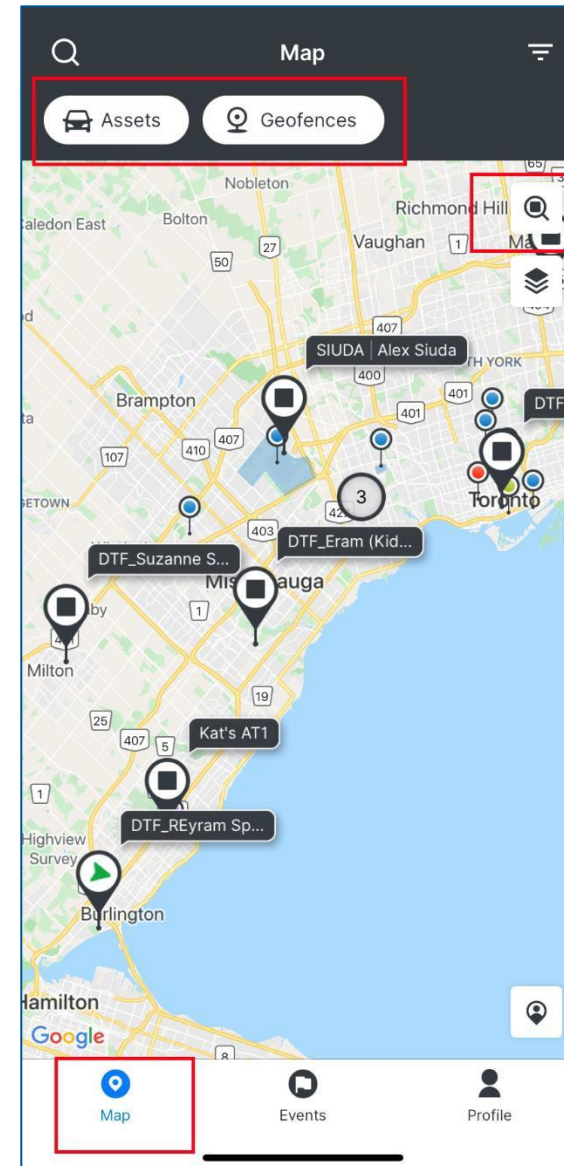




# Map Module: Global Search

- On the main page of the **Map module**, the user has the possibility to search **Assets**, **Geofences** or **Addresses**.
- The search tab is available in the **Assets and Geofences** view of the Map module.
- Search is dynamic and starts from the first letter entered.
- When text is entered, three different types of results can appear:
  - **Asset**
  - **Geofence**
  - **Address**
- Note: A maximum number of 5 search items will be displayed for each category.
- Recently searched and picked items will be available when the **Global search** is launched, so users can quickly select the desired item without needing to type anything.
- The recent searches list is displayed only when the search field is empty.
- Users can view **Up to 12 recently picked items** from the Global search.

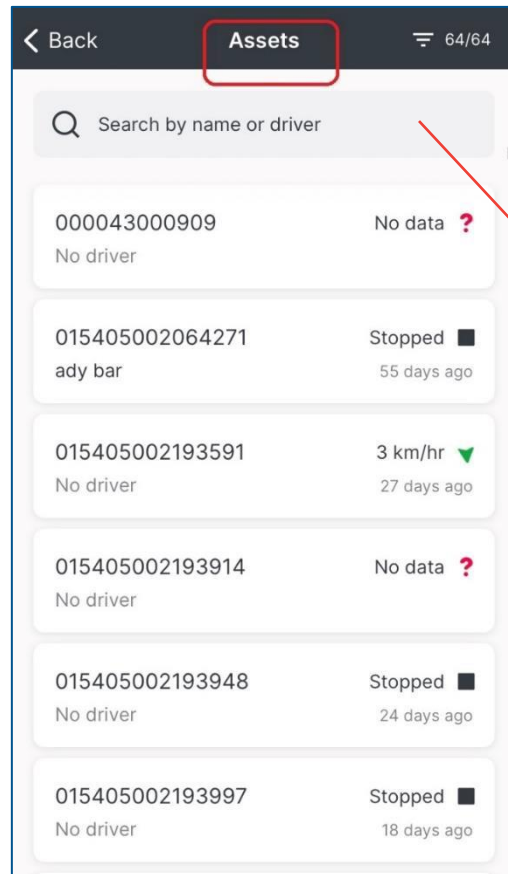
Global search



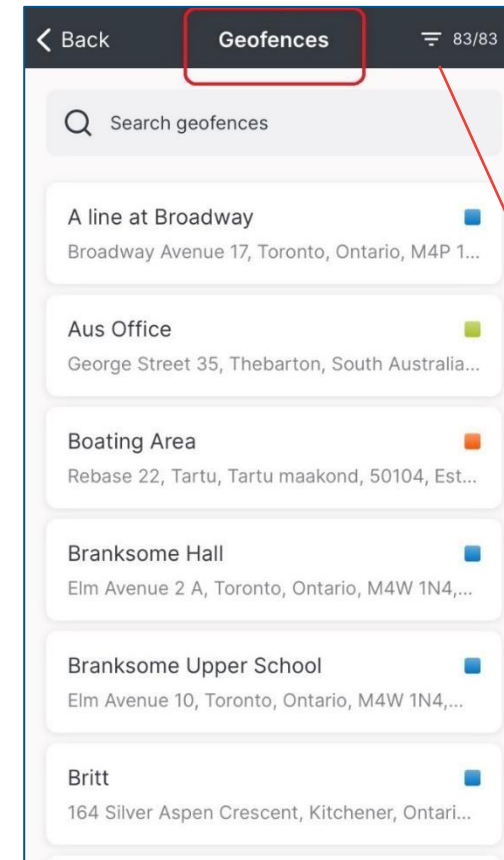
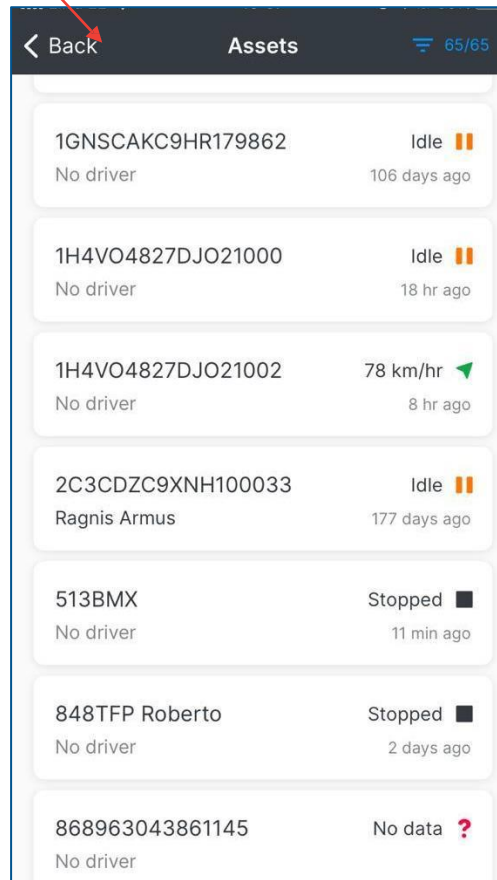


# Search : Asset and Geofence

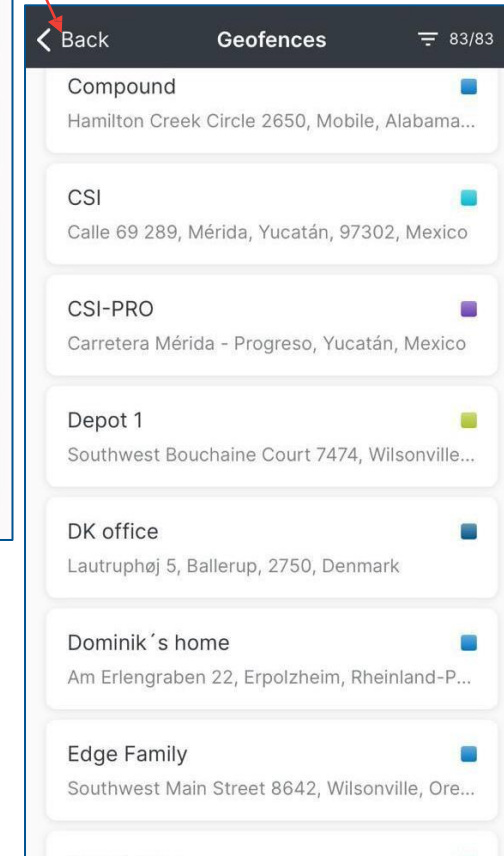
- When empty, search fields will be automatically hidden when the user scrolls down on the Assets and the Geofence Screens.
- The search field will be accessible when the user scrolls up again (pulls down the list).
- A field containing an active Filter button string will always be visible.



Search field Hidden when scrolling down: If empty



Search field Hidden when scrolling down: If empty





## *Let's review updates made to Geofence and Asset visibility*

---

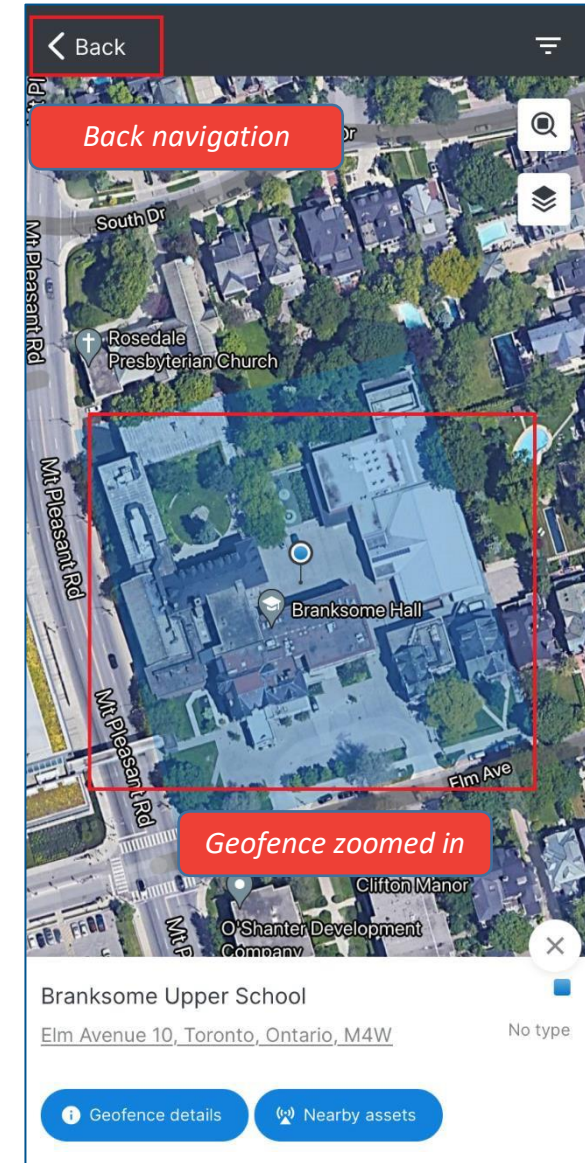
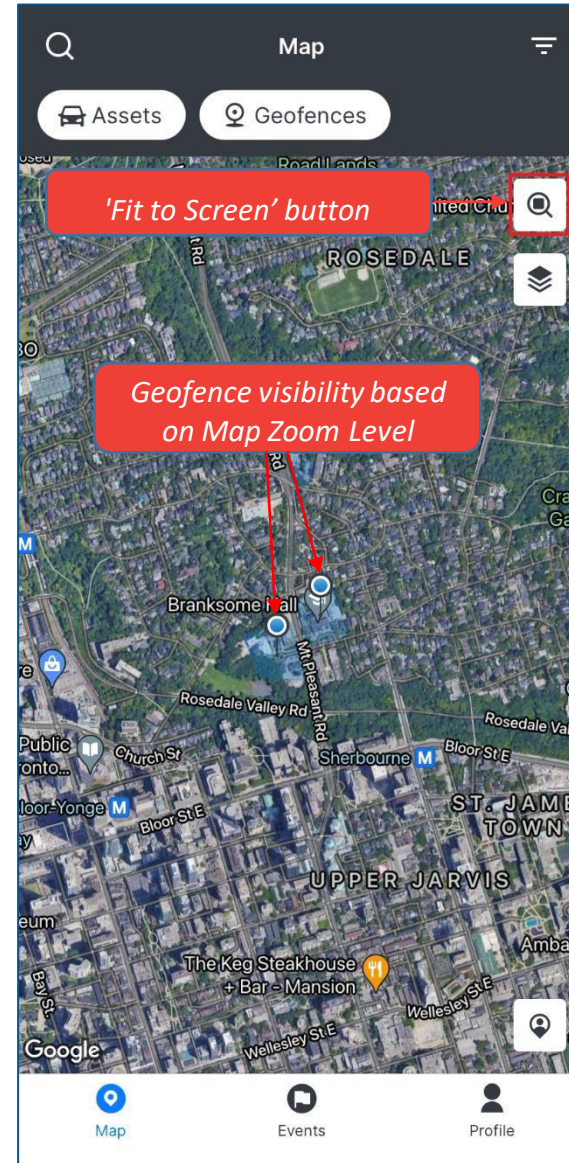






# Map Display – & Geofences Visibility

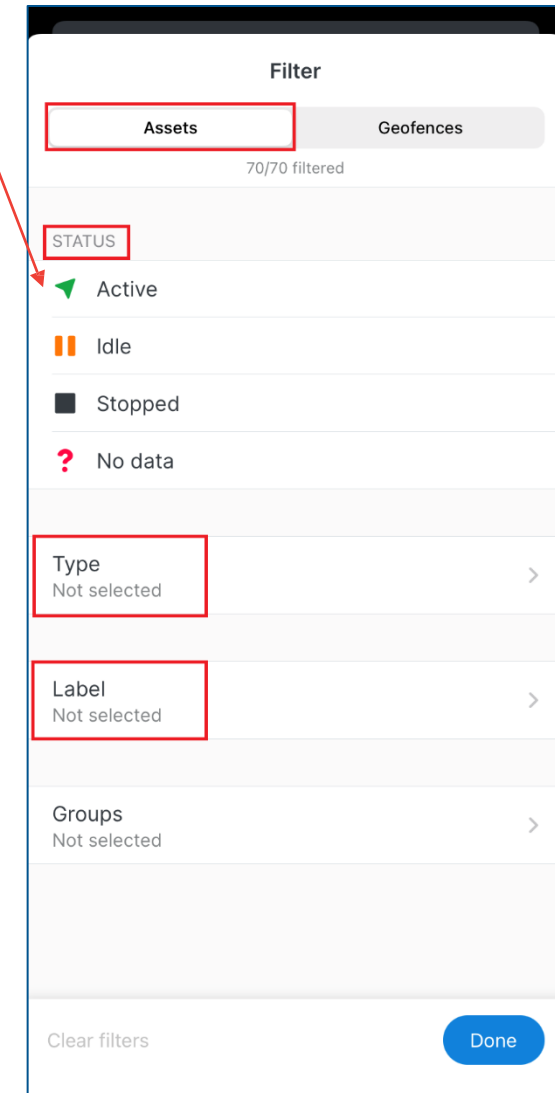
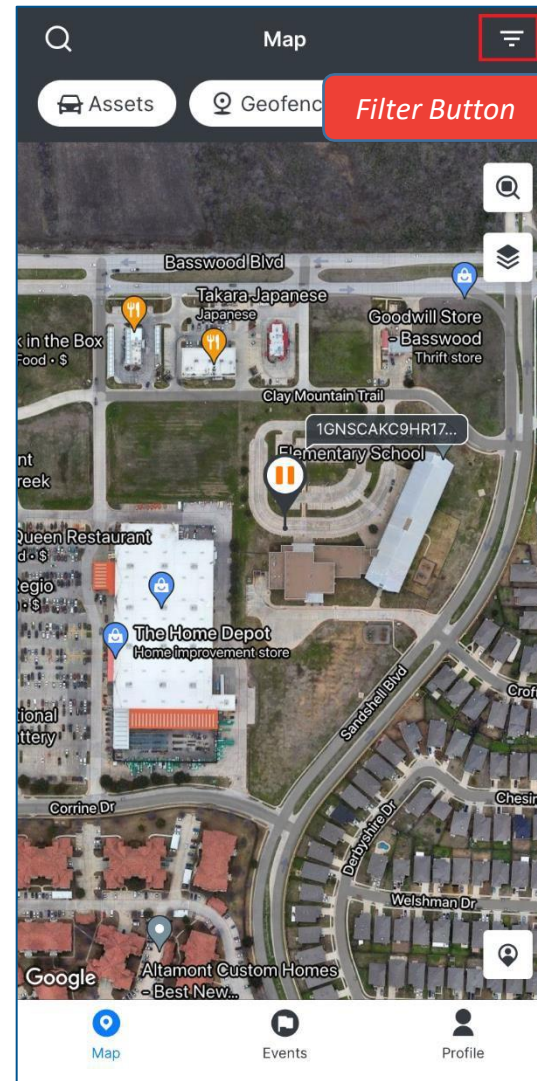
- FC HUB Mobile App users can access **Assets and Geofences** **directly** from the map view on the Map module.
- Follow the steps below to access the Map on the FC HUB Mobile App:
  1. Log in to **FC HUB Mobile App**
  2. By default, the **Map Screen** will be displayed
- The **Zoom level** is adjusted when selecting any element (asset, geofence or a cluster) on the Map.
  - Tapping on any map element (Asset marker, Geofence marker or My location marker) except cluster marker will centre the tapped marker with zoom level 17 (or keep the zoom level, if between 15-19).
- 3. Tap an **asset or a geofence on the Map**. The screen will be zoomed in to that asset or geofence
- 4. Zoom level will restore with the **Back** navigation button on the top of the screen
- Users can also use a **'Fit to Screen'** button on the Map. It will fit the Screen size and orientation.
- Users can **Double-tap-drag** to adjust the zoom level of the map view dynamically.
- Geofence Visibility depends on the map zoom level. Only visually relevant geofence markers and areas will be displayed, based on the map zoom level and the area that is visible.





# Review of Assets Filter Button

- FC HUB Mobile App users will be able to use filters from the Map Module by tapping on the **Filter button** on the top.
- The **Filter Screen** displays options as below:
  - **Status:** Users will be able to filter their assets as per the statuses defined. The status of the asset can be:
    - **Active:** The asset is driving.
    - **Idle:** The ignition is ON for an asset, but the asset is not moving.
    - **Stopped:** The ignition is OFF of an asset.
    - **No data:** No data is received from the device.
  - **Type:** Types of the assets can be car, truck etc.
    - The new Assets types can be only be created from the Web. However, users can choose the types from the app.
  - **Label:** Users can label/tag their Assets. It helps customers flexibly categorize Assets.
    - The new Assets labels can only be created from the Web. However, users can choose the labels from the app.



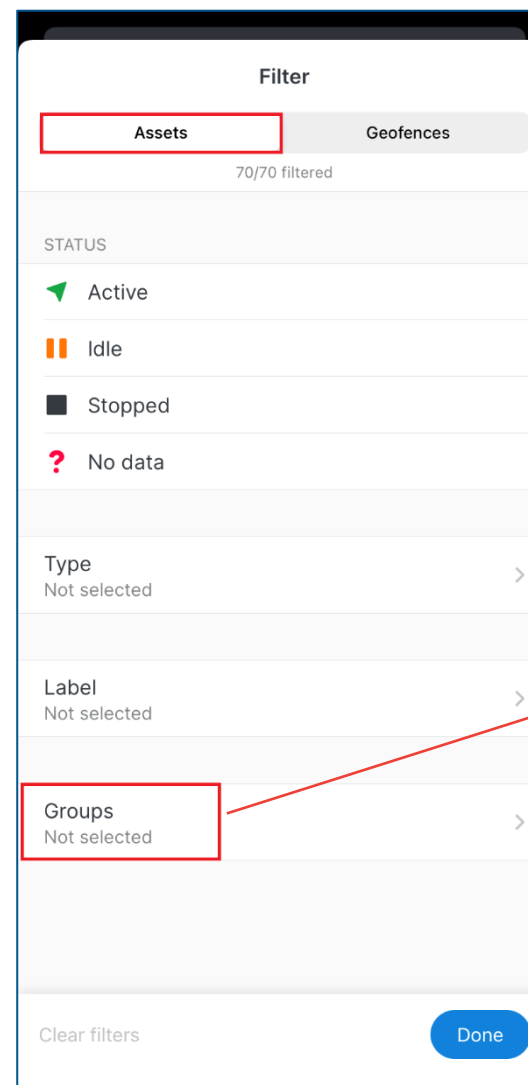
Filter Screen



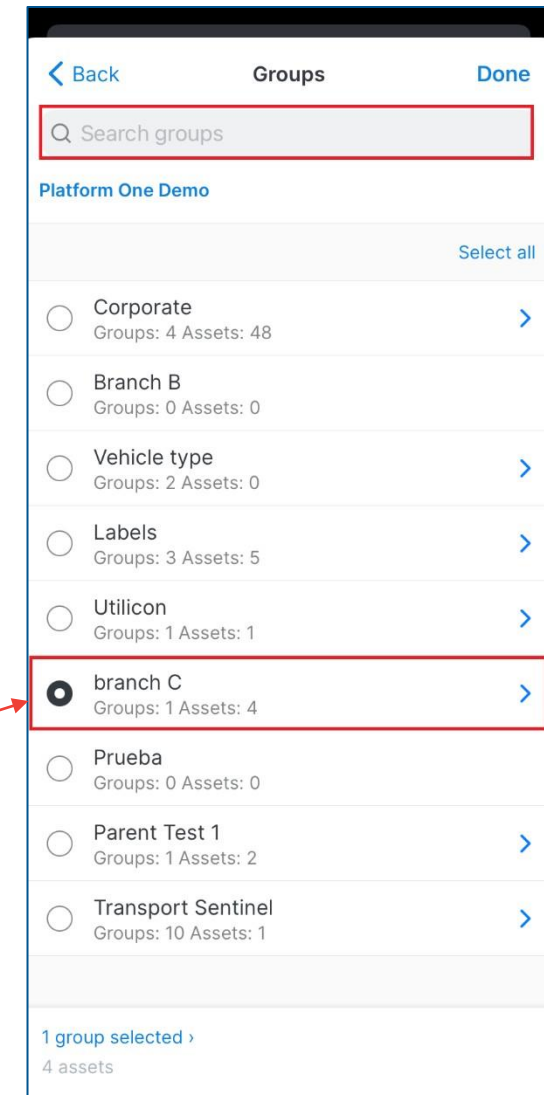


# Assets Filter Button – Search & Select Groups

- Hierarchy is called “**Groups**” in FC Hub Web and Mobile applications.
- **Groups** is used to manage data access within organizations.
- In other words, it determines which **assets, geofences or users** are visible and to whom.
- Users will be pre-assigned a group from the FC Hub Web application and will only see data based on their **Access level**.
- The **Filter Screen** displays options as below:
  - **Groups:** Pre-defined selection of Assets.
    - Groups are configured from the FC Hub Web application. Mobile users will **NOT** be able to create or manage groups from the app.
  - **Search Groups:** Ability to search groups based on the group name.
    - Users can now search groups that have been pre-defined from the FC Hub Web application.
- Follow the steps below to apply an Assets Group filter to the Map module:
  1. Log in to **FC HUB Mobile App**
  2. By default, the **Map Screen** will be displayed
  3. Tap the **Filter button** on the top
  4. Tap the **Assets** button from the Filter screen
  5. Tap on **Groups**
  6. Tap the desired **Groups**



Filter Screen



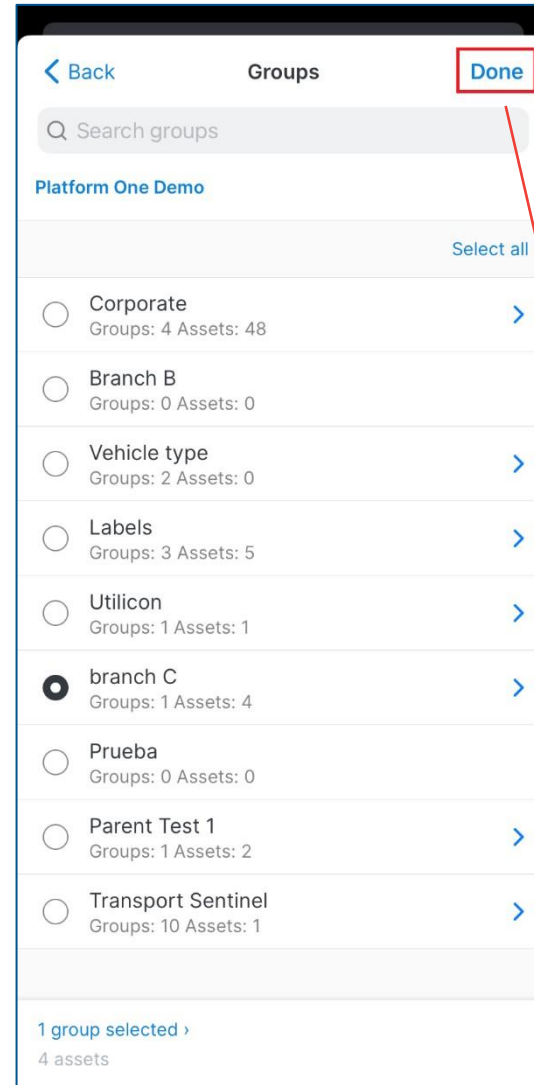
Groups Screen



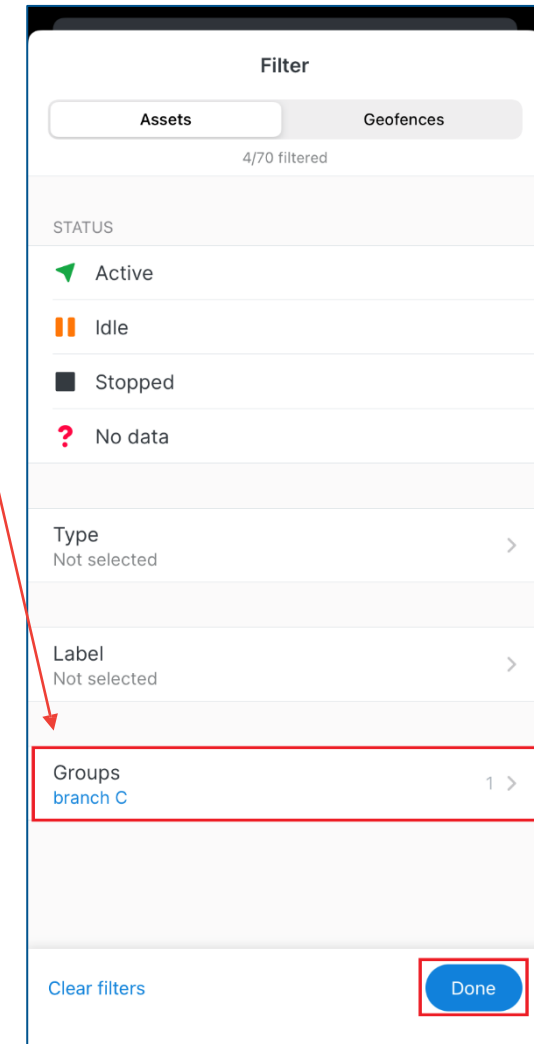
# Assets Filter Button – Apply Groups

➤ Follow the steps below to apply an Assets Group filter to the Map module:

1. Tap the **Done** button from the Groups screen
2. Tap the **Done** button from the Filter screen



Groups Screen



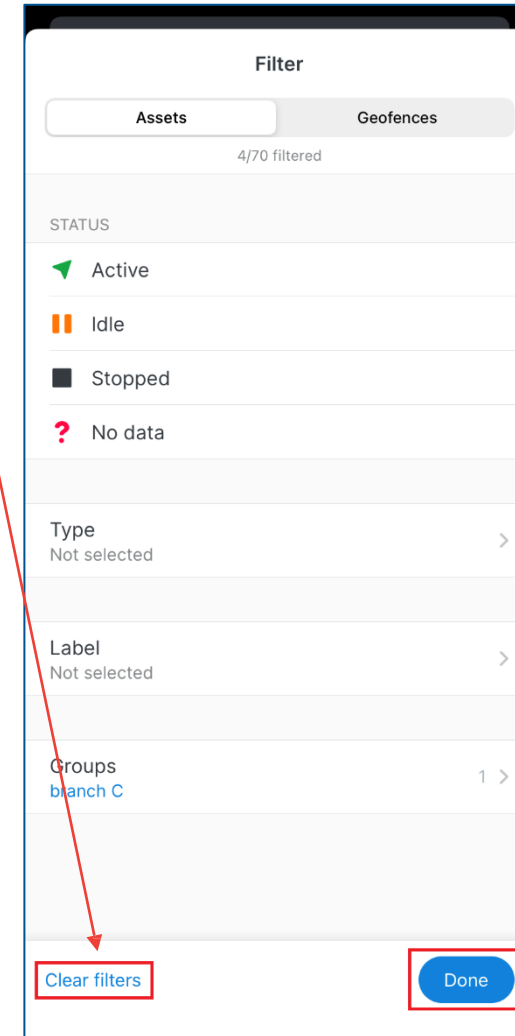
Filter Screen



# Map – Assets Group Visibility

- The Map now displays the **selected Groups** and associated **Assets**
- The Assets Group filter can be **removed** from the Map.
- Follow the steps below to remove the Assets Group filter applied to the Map module:
  1. To clear the selection, Tap the **Filter** Icon
  2. Tap **Clear filters**
  3. Tap **Done**

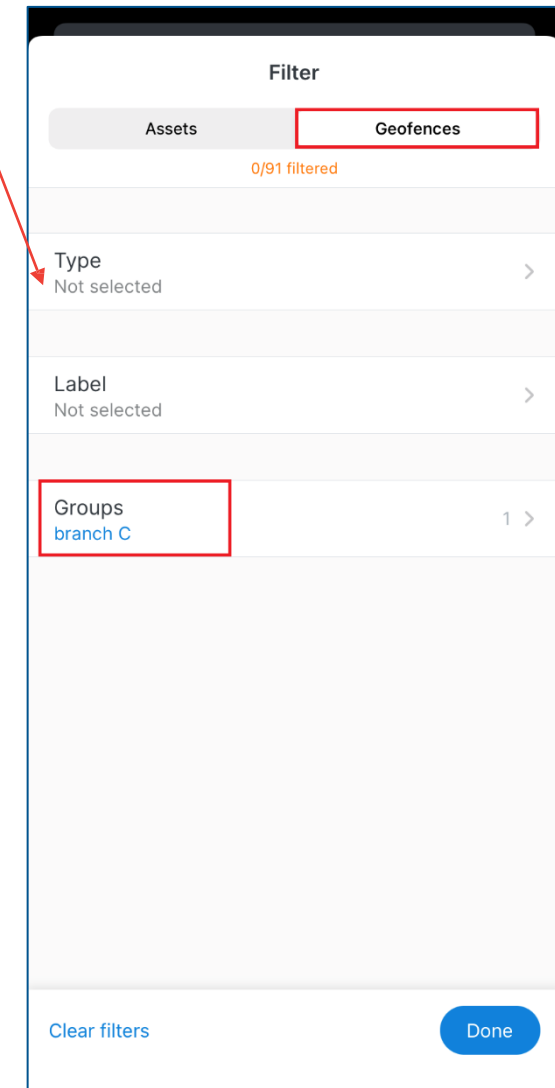
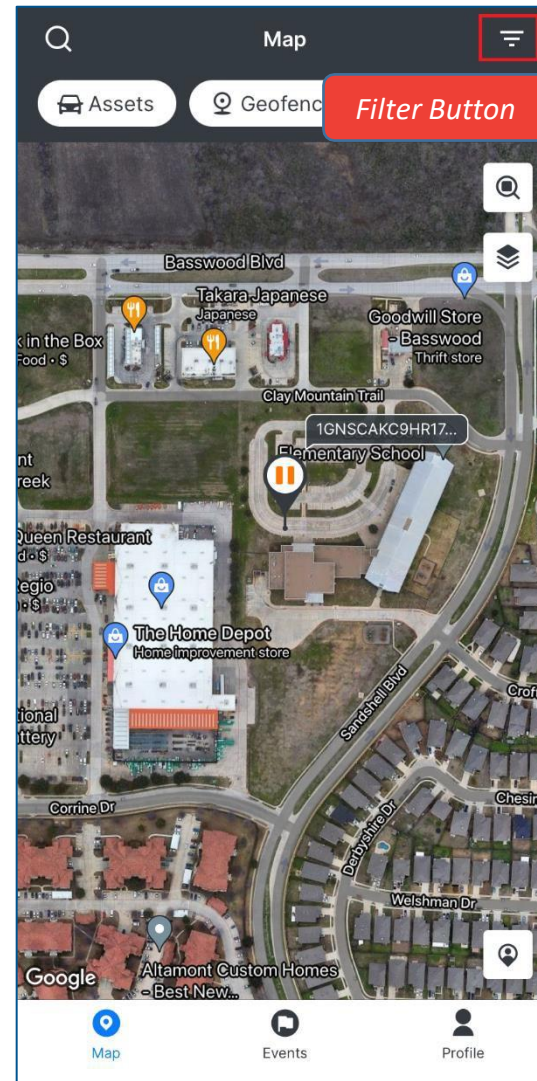
*Note: If a user logs out of the mobile app. the **filters** will **automatically** be **cleared**.*





# Geofences Filter button Select Groups

- FC HUB Mobile users have the ability to define a **separate set of geofences**.
- Geofences filter is similar to the Assets filter.
- Users will be pre-assigned a group from the FC Hub Web application and will only see data based on their **permission Access level**.
- The **Filter Screen** displays options as below:
  - **Groups:** Pre-defined selection of Geofences.
    - Groups are configured from the FC Hub Web application. Mobile users will **NOT** be able to create or manage groups from the app.
- Follow the steps below to apply a Geofences Group filter to the Map module:
  1. Log in to **FC HUB Mobile App**
  2. By default, the **Map Screen** will be displayed
  3. Tap the **Filter button** on the top
  4. Tap the **Geofences** button from the Filter screen
  5. Tap on **Groups**





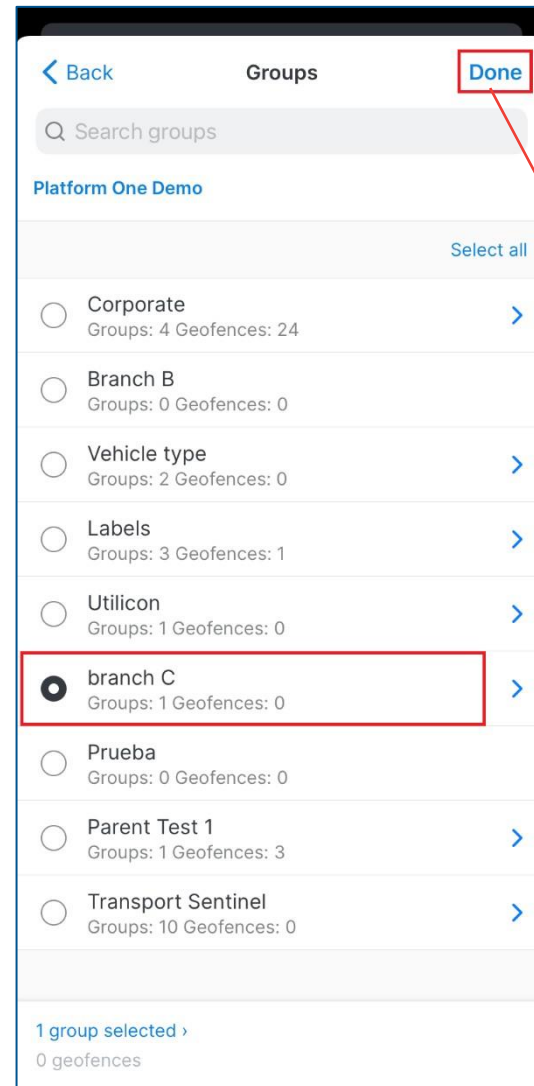
# Geofences Filter Button – Apply Groups

➤ Follow the steps below to apply a Geofences Group filter to the Map module:

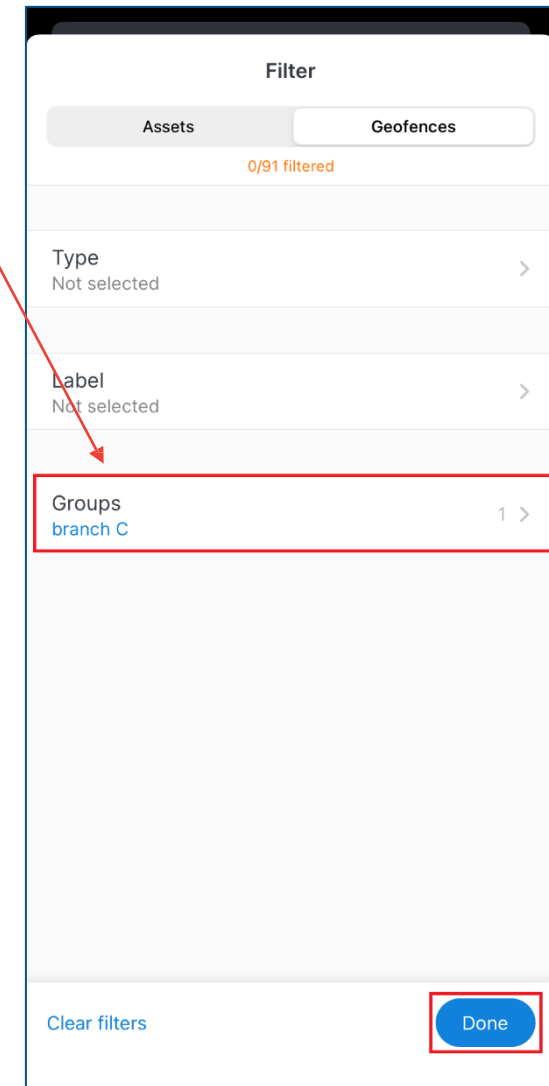
1. Tap the desired **Groups**

1. Tap the **Done** button from the Groups screen

2. Tap the **Done** button from the Filter screen



Groups Screen



Filter Screen

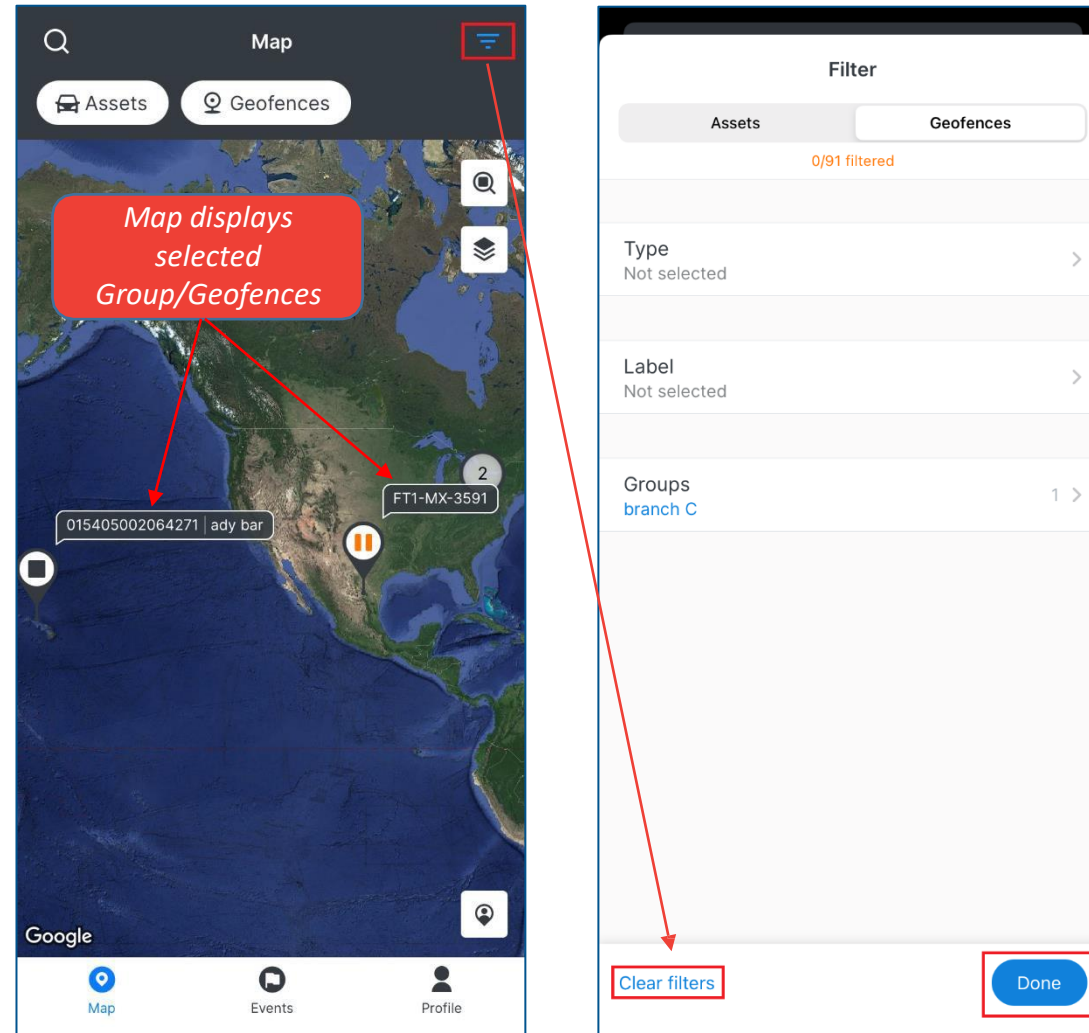


# Map – Geofences Group Visibility



[Table of Contents](#)

- The Map displays the **selected Groups** and associated **Geofences**
- The Geofences Group filter can be **removed** from the Map.
- Follow the steps below to remove a Geofences Group filter applied to the Map module:
  1. To clear the selection, Tap the **Filter** Icon from the map
  2. Tap **Clear filters** from the Filter screen
  3. Tap **Done**



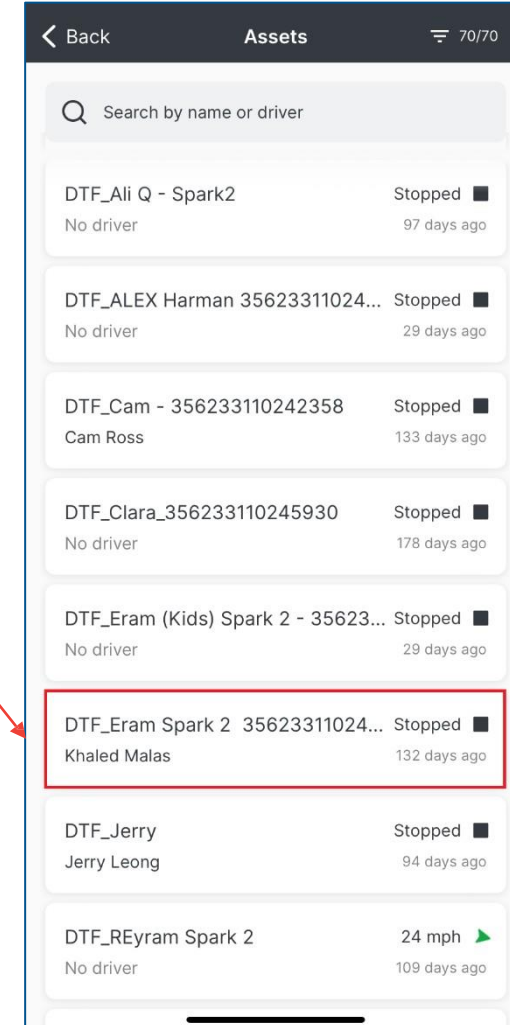
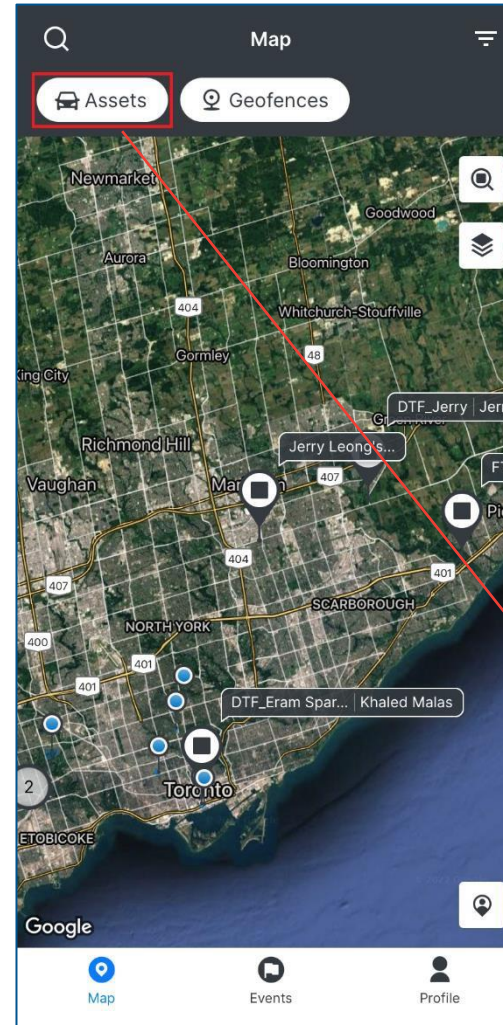


# View Assigned Asset Group in Asset Details

➤ FC HUB Mobile users can now view the pre-assigned **Asset Group** from the **Asset Details** screen. An Asset group is pre-assigned from the FC Hub Web application.

➤ Follow the steps below to view the desired Asset's Group from the Map module:

1. From the Map tap the desired **Asset**, or from the top toolbar tap the **Assets** button, and tap the **Asset** from the Assets screen



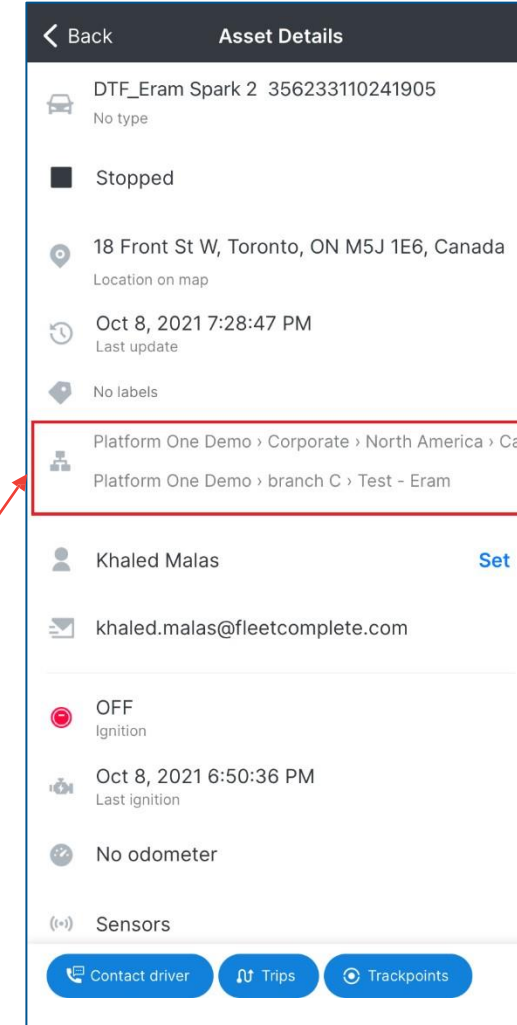
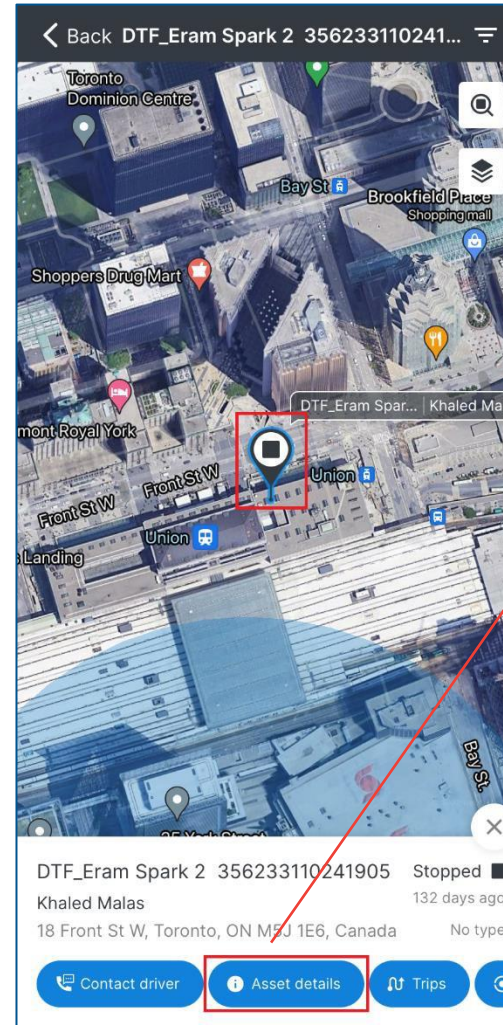
# View Assigned Asset Group in Asset Details cont'd...



[Table of Contents](#)

➤ Follow the steps below to view the desired Asset's Group from the Map module:

1. From the bottom toolbar of the quick view card, tap the **Asset details** button
2. View the selected **Asset's assigned Group** from the Asset Details screen



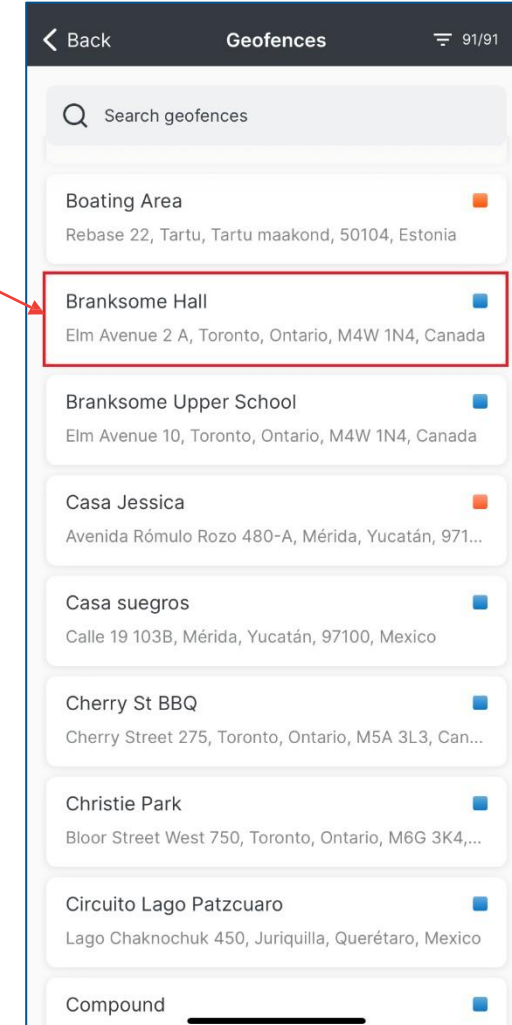
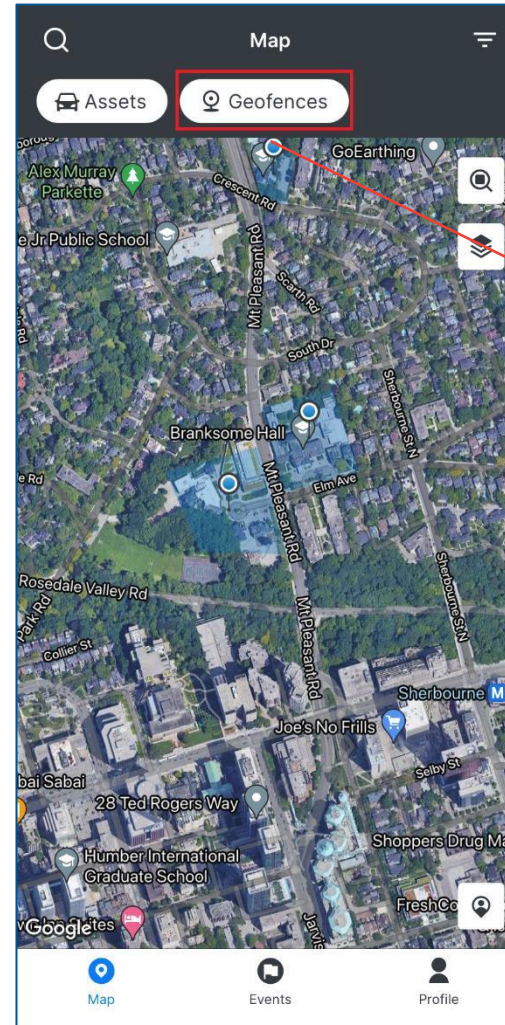




# View Assigned Geofence Group in Geofence Details

- Similar to Asset Group, FC HUB Mobile users can now view the pre-assigned **Geofence Group** from the **Geofence Details** screen. A Geofence group is pre-assigned from the FC Hub Web application.
- Follow the steps below to view the desired Geofence's Group from the Map module:

1. From the Map, tap the desired **Geofence** or from the top toolbar tap the **Geofences** button, and tap the **Geofence**



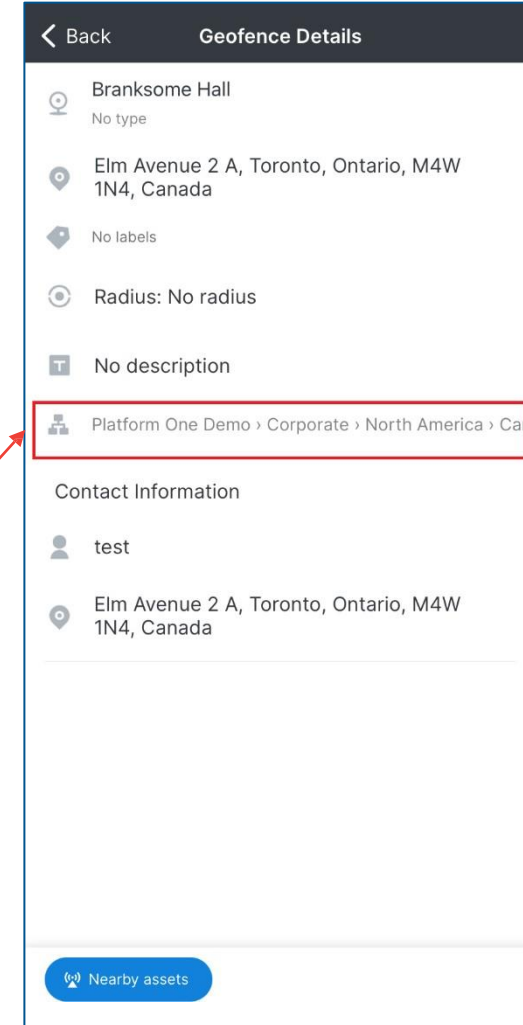
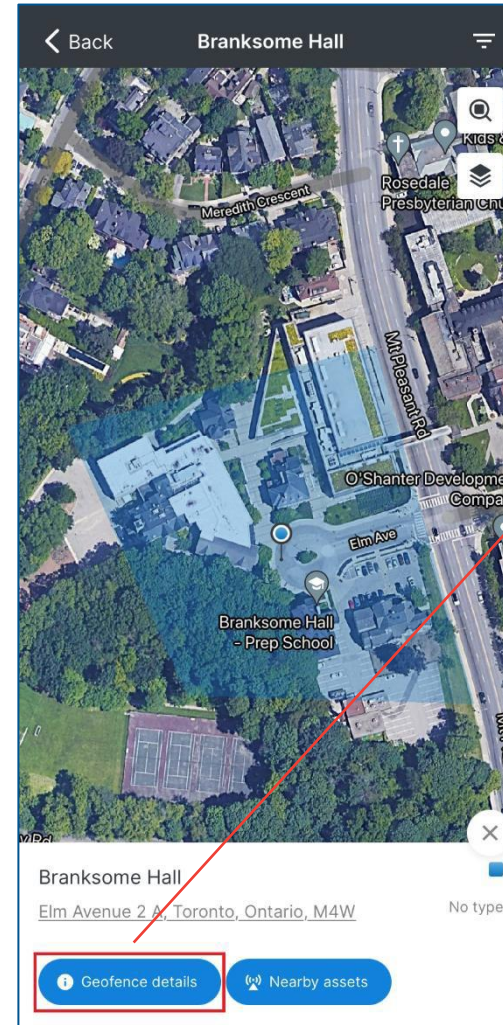
# View Assigned Geofence Group in Geofence Details cont'd...



[Table of Contents](#)

➤ Follow the steps below to view the desired Geofence's Group from the Map module:

1. From the bottom toolbar of the quick view card, tap the **Geofence details** button
2. View the selected **Geofence's assigned Group** from the Geofence Details screen







Thank You!